



Take advantage of the fantastic Cali Pass option for the 2025/2026 season which gives you options to avoid long lift lines, get more time on the slopes and visit different terrain.

Access to Four Great Ski Facilities With Exceptional Cali Pass Offers

What's a better way to enjoy skiing and boarding than having unlimited access to four iconic California resorts? The answer is getting 19 worldwide Powder Alliance gems in the bargain.

Yes, the Cali Pass is here, and it's promising a winter like no other. Get ready for your new pass to good times in the snowy paradise of California and beyond!

Cali Pass holders can enjoy unlimited skiing and snowboarding at China Peak, Dodge Ridge, Mountain High, and Bear Valley.

But the adventure doesn't stop in California. Cali Pass holders receive a bonus of 42 Free tickets to

Upgrades at China Peak for This Season

The China Peak Management team is pleased to showcase a number of important new improvements that have been made for the 2025/2026 season.

Mainstream Station has undergone some interesting changes and will be home to the new 1st Turn Program being launched this season. Be sure to check what's new at Sully's Pub at the Day Lodge

The Base Camp Sports facility now includes a Snack Shack for your convenience. The Inn at China Peak has begun a phase of multiple upgrades for guests.

(continued on page 31)

explore the slopes at 14 Powder Alliance Resorts around the world.

They include the snow-covered wonderland of Tahoe to the breathtaking peaks in Alaska, Colorado, New Mexico, Montana, Oregon,



Cali Pass holders can enjoy unlimited skiing and snow boarding at all four sister resorts.

Washington, and Wyoming.

Imagine experiencing the thrill of the slopes without the burden of massive crowds, long lines, or exorbitant prices.

Yes, the Cali Pass is available,
(continued page 16)

IN THIS ISSUE:

- Fresno Carriage Offers Rides
- Build a Snowman With the Kids
- Cal Trans Crew Keeps You Safe
- Staff Promotions and Honors
- RV Camping at China Peak
- Neil Buller Wins "The Mike" Award
- Annual China Peak Events
- Chad Sainsbury Gets Promotion
- Cali Pass Benefits Explained
- Join the Fresno Ski Club

CHINA PEAK

- Diana Graue Heads Ski Patrol
- China Peak Offers Shuttle Service
- "Deputy Dog" Retires
- Proper Waxing Your Equipment
- Samantha Malz, Heads Ski School
- Look for These Entertainers
- China Peak or The Landing Weddings
- Medical Clinic Available in Prather
- Karen Garcia Wins "The Van Neely"
- China Peak Makes Improvements

Published by Talahi Media Arts, Prather, CA - Talahi.com - (559) 298-3133

Avoid Long Drives and Lift Lines, Spend More Time on the Slopes

What do skiers and boarders look for when planning a fun filled day, weekend outing or extended vacation?

Let's start with a four hour or less drive to their destination. Their ultimate day would see clear blue skies with slopes groomed to a lovely corduroy texture, featuring no crowding and fast moving lift lines, quick access to a variety of food and beverages, all at an affordable price.

Wow. This is a perfect description for China Peak Mountain Resort.

The fun visitors have at China Peak is quite possibly the best kept secret in the California winter sports community.

It is a fact China Peak is the only Central Sierra resort on the west slope with terrain, acreage and elevations like Tahoe ski resorts.

(continued on page 13)

Come Work as a CP Ski Instructor, No Experience Needed, We Train You

On behalf of China Peak, we would like to extend a special announcement to instructors, coaches, outdoor enthusiasts and all other passionate individuals.

This is an opportunity to join a new era at the China Peak Ski & Board School.

With a fresh face at the helm (see Page 25 article on Samantha Malz), we are reaching out and encouraging applications.

If you have ever felt barred by the entry level of the sport, consider that as a thing of the past.

Our Ski & Board School Team at China Peak will be providing you with the skills that you need to inspire the next generation of skiers and boarders. Help them learn and enjoy the slopes as you do!

Don't know how to ski or snowboard? No problem. We want to teach



If you have never put chains on your vehicle, practice at home before you hit the road. you, AND pay you for it! So, what's the catch? There is tremendous responsibility that comes with teaching.

You need to be an inspiration to those around you! We are building a dedicated team, focused on the goal of creating lifelong skiers and boarders, and we want you to be a part of it. Apply now, only at skichi-napeak.com

Ready To Learn To Ski Or Snowboard? Well the New 1st Turn Program Launches This Winter

The time to learn to ski or board has never been better. The new 1st Turn Program launches this winter at China Peak and all other Cali Pass resorts. This program is a new interactive way to learn to ski or ride.

Located inside Mainstream, the 1st Turn Program is a new initiative aimed at making your first day on the slopes the most productive yet.

Enrolled first timers will head to

Mainstream's new 1st Turn meeting area. There they will be greeted by instructors and get ready for their first day on the slopes.

You start with an informative video showing you what to expect. You meet other beginners and instructors. Then you gear up, get sorted into a lesson groups and head right to the 200' moving carpet. After your lesson you can continue to practice your skills on the moving carpets. When the formal lesson is over, instructors will remain to give you tips while you practice.

The 3-day 1st Turn package is the best option and best value. It only gets easier after the first day! The 3-day option has the lowest cost per day and by day 3 you'll be headed up the mountain to ski or ride down Academy!

SHAVER LAKE SPORTS

Winter

Open year 'round for all your sporting needs!

Summer

- Ski & Snowboard Rentals & Waxing
- Snow Sleds, Saucers, Tubes
- Snow & Ski Apparel
- Hiking & Snow Boots
- Camping Gear
- Fishing Tackle & Licenses
- Hunting Supplies & Licenses
- Snow Tire Chains
- Snow Park Passes
- Souvenirs



- Camping Gear & Supplies
- Hiking & Work Boots
- Fishing Bait & Tackle
- Fishing Poles & Nets
- Fishing Licenses
- Beach Toys & Sporting Goods
- Summer Apparel
- Boating Supplies
- Souvenirs

www.ShaverLakeSports.com

(559) 841-2740

ShaverLakeSports@gmail.com 41777 Tollhouse Road, Shaver Lake, CA 93664

Always looking for dependable team members at all 4 locations!

Happy Camper General Store
Located Inside Camp Edison



* Groceries * Sundries * Ice * Hand-Scooped Ice Cream *
* Firewood * T-shirts * Sweatshirts * Souvenirs & More!

Summer Fun!

Shaver Lake Marina
559-841-5331 ShaverLakeMarina.com



* Boat Slips* Pontoon Boats * Fishing Boats * Canoes*
* WaveRunners * Pedal Boats * Paddle Boards * Kayaks *

Visit any of our websites to download a job application!

Shaver Lake Hardware 559-841-3600

We provide the tools and supplies you need to take care of your home and business.
41698 Tollhouse Road, Shaver Lake, CA 93664 www.ShaverLakeHardware.com



#MountainStrong

We carry all types of hardware supplies including:

- Logging/Climbing Gear
- Drill Bits and Drivers
- Door Hardware
- Electrical Supplies
- Nuts and Bolts
- Saws and Blades
- Paint and Paint Supplies
- Work Boots

Equipment Repair Shop

Visit our website for Equipment Rentals



**Business Partner**

Mountain REGISTRATION SERVICES

**Renewals • Transfers
Look-ups • Tags & Plates**

Monday - Friday 9 am - 5 pm
Saturday 10 am - 2 pm

(559) 855-6770

29533 Auberry Road, #102, Prather, CA 93651



Let Fresno Carriage, located in Prather, help provide you with the opportunity to surprise that someone special with a unique carriage ride. They will never forget this experience.

Horse Drawn Carriage Rides Are Ideal for Variety of Special Events

Fresno Carriage provides unique opportunities for special occasions you have on the horizon. When you want to provide a long lasting, first impression, Fresno Carriage has the answer for you.

This locally owned and operated company is located in Prather, about, 25 miles NE of Clovis. The stable of beautiful, black Percheron horses are perfect to power the variety of carriages available for nearly any occasion!

Let us provide service for a wedding, prom, anniversary, birthday, funeral, Quinceanera, parade, holiday party or corporate event.

Perhaps you can take your special someone for a quiet ride under the stars, with a little wine, down to her favorite restaurant, a date she will

never forget! Contact Barbara at (559) 855-4480 or barbaradotta@gmail.com.

Gift Cards Available Online and at the Peak

China Peak gift cards are excellent gifts for skier or snowboarder friends and family. They are perfect for the holidays, birthdays and anniversaries or for someone who wants to learn to ski or snowboard.

Cards of \$25, \$50, \$100 and \$200 or more are valid for all services including lodging, season passes, lift tickets, food and beverage and sport shop merchandise.

Go online to SkiChinaPeak.com. Allow 5-7 days for delivery, or contact Guest Services at (559) 233-2500, extension 5100.

For more Information & online camping reservations
Visit www.CampEdison.com
42696 Tollhouse Rd, Shaver Lake, Ca.
(559) 841-3134 - option 6

OVER 60 YEARS
Camp Edison
EST. 1963
OF FAMILY CAMPING



Summer Camping Reservation System

- * May 15th - Oct 14th
- * 252 Campsites available
- * BBQ pit, fire ring, & picnic table
- * 30 amp, 50 amp, & 110 electricity
- * Beach front day Use
- * Tent trailer rental
- * Kids educational activities
- * 35 miles of hiking trails

Winter Camping First Come - First Serve

- * \$50 a night (Winter Special) October 15th - May 14th
- * 30 min. to China Peak
- * BBQ pit, fire ring, & picnic table
- * 30 amp, 50 amp, & 110 electricity
- * Hot showers/Clean Bathrooms
- * Laundry facilities
- * RV dump stations
- * Snow play & sledding
- * Plowed sites

Watch the Gleam in Your Kid’s Eye While You Teach Them to Build a Snowman

Plan winter adventures to include the whole family. Find different things to try.

Here is a fun idea! When winter time comes along and storms bring heavy snow that piles high, get the family and your friends together to build a snowman!

It is not that hard. What could be more simple than rolling up three snowballs and stack them with the largest on the bottom and the smallest on top.

Next you go wild with your artistic side as you decorate your new friend. Hey, they need a face, arms, clothes and who knows what!



To make a snowman, start by rolling up balls of the cold stuff that will be the body.

Make sure you build your snowman on a flat surface. Check for snow that’s real moist and easily packable. Scoop some up and press it together.

Keep working it until it forms into a ball. See! You can make a snow-

man. Try to put him in the shade. This will help the guy last longer. And who doesn’t like a snowman who can last longer.

Roll up your snowman by packing a snowball with your hands for the bottom section. Continue adding to it and make it into a round shape. Wear warm, waterproof gloves to protect your hands from handling cold snow.

Create a smaller middle section and put it onto the bottom ball. Make sure to center it on the bottom. Form a one foot snowball for the head and put it on top. Then pack some snow between the sections to the snowman a uniform look.

For a little different look, create a really large fat body and put a head on top of it.

Now the real fun begins: bringing your creation to life. Stick the traditional carrot in his face for a nose. For the eyes, use charcoal, buttons or pebbles. Make a mouth with a row of pebbles, charcoal or a couple of sticks.

Place two sticks for the snowman’s arms. If you want, put a shirt or coat around the snowman’s body.

Top him off with a hat, scarf, a tie, sunglasses, or other accessories to make your snowman stand out from others.



Just watching the look on your kids while building a snowman is a very warm feeling and will give a lasting impression. At left is a brief description on “How to Build a Snowman”.

Driving on Snow Covered Winter Roads Can Prove to Be Very Tricky

Drive slowly. Everything takes longer on snowy roads. Accelerating, stopping, turning – nothing happens as quick as on dry roads.

The normal dry pavement following distance of three to four seconds should be increased to eight to ten.

Know your brakes. Whether you have anti lock brakes or not, the best way to stop is threshold breaking.

Keep the heel of your foot on the floor and use the ball of your foot to apply firm, steady pressure on the brake pedal.

Don’t stop if you can avoid it. There’s a big difference in the amount of inertia it takes to start

moving from a full stop versus how much it takes to get moving while still rolling. Don’t power up hills. Applying extra gas on snow-covered roads just starts your wheels spinning.

Don’t stop going up a hill. There’s nothing worse than trying to get a vehicle moving again up a hill on an icy road. Get some inertia going on a flat roadway before you take on the hill.

Stay home. If you really don’t have to go out, don’t. Even if you can drive well in the snow, not everyone else can.

Don’t tempt fate: If you don’t have somewhere you have to be, watch the snow from indoors.

New Shuttle Service Available at China Peak for Guest Convenience

Getting around China Peak will be easier this winter, as a new shuttle service is being implemented. It will take guests from different areas in the parking lots to drop off zones near the base area.

Shuttles will have pickup zones across the parking lots, so no matter how far you park, you can hop on the shuttle and get dropped off right at one of the bridges.

Parked in the back lot but headed to Chair 6? The shuttles will drop you off right at the bridge across from the Day lodge. Shuttles will operate on weekends and holidays.

A new base area on-snow shuttle will also be introduced this winter, taking guests from around the base area to the back bridges where they will be close to the parking lots and

parking area shuttles.

Finishing your day at Sully’s Pub at the Day lodge? Hop on the snow shuttle to take a quick ride to the back bridge by Mainstream, from there you can either walk to your vehicle or take the parking lot shuttle if you’re parked further away.

Dropping off a skier or snowboarder and then headed out? Want to drop off the family and equipment at the front before you park?

New drop off zones make it easy to get in and out of China Peak. There will be 2 new drop off zones, located at the front entrance and the back parking lot.

Easily drop off people and gear and then either go park or head out and come back to pick everyone up later!



A new shuttle bus service will help guests get around China Peak much more comfortably this season. There will be two new drop off zones, at front entrance and back parking lot.





A Peaceful Alternative on the Mountain
Houses and cabins for rent as close to China Peak as Shaver Lake and a world apart in Big Creek Canyon.

Fresno Carriage

(559) 855-4480

Carriages for all occasions: weddings, funerals, parades, parties, Christmas events, corporate events, rodeos and quinceaneras.



Highlighting the Careers and Activities of Special CP Staff

Each and every year, the China Peak management teas has the pleasure of welcoming and recognizing hard-working and talented employees.

Whether it is their first year or their fifth year, we would like to take an opportunity to highlight some of these folks.

Steve “S” is approaching his third year as a Purchasing Assistant, Shuttle Driver and most importantly, Supervisor Amber’s right hand guy.

Steve is incredibly reliable and never fails us. His attention to detail can be overwhelming, but very necessary with the massive variety of parts and supplies required to operate and maintain this resort.

We are very fortunate that Steve would rather stay busy up here with us instead of retiring, although he will surely be enjoying the latter soon.



Nick Harden is the new Hotel Manager at The Inn At China Peak, overseeing upgrades.

China Peak welcomes new hotel manager, Nick Harden. Nick brings a lot to the table and understands the experience China Peak strives to provide to our guests.

He is hard working and adamant on improvements. This summer Nick had his plate full with various projects throughout the hotel. The hotel, as many know, is an older building that requires constant attention to detail. Nick doesn’t let anything slip through the cracks. We are lucky to have someone like him who takes initiative in a leadership role. We hope everyone continues to enjoy their stay at the China Peak Inn and recognizes the improvements we have made for our guest experience. These improvements include: new carpet, painted rooms, and overall room improvements. Nick looks forward to continuing to make improvements throughout the hotel and provide the best experience for all guests staying at the China Peak Inn.

James Hunter and Luke Johnson are the young guns in the Vehicle Shop. These guys have had their hands full getting a full wrap on our entire vehicle fleet, but they have a ton of talent and our full support.

This will be James’ third winter and Luke’s second. Both lend a hand with snow removal and



At the left are James Hunter and Luke Johnson, the young guns in the Vehicle Shop. At the right is Dustin Hargas Snow-making Supervisor, who leads the team of snowmakers.

We are excited for the future of both these young mechanics, and are doing everything we can to lure them into the industry for good.

Josh Lenert-Mondou is our newest Marketing Supervisor. Josh has quickly grown from our Events Co-



Josh Lenert-Mondou, formerly the Events Coordinator, is now the Marketing Manager.

ordinator to somebody that we simply cannot operate without.

He fulfills a critical role that encompasses everything from events



and guest services to marketing both within the resort and the Cali Pass Resorts brand.

Josh hires our fantastic music talent year-round. He has the charisma and personality that thrives in this role. We are lucky to have him as an employee and ambassador.

Dustin Hargis is due his recognition. As an employee of over 10 years now, it is fair to say that China Peak is now his second home.

Having been with the snow-making crew for several years, he is our Snow-making Supervisor. In addition to that, he has a key front-of-the-house role as both a ski and snowboard instructor. Like many of our mountain operations employees, Dustin has a multitude of skills and is an extremely hard worker.

He is the perfect example of someone who sets the bar. He has a passion for being in the mountains, working hard, making snow and teaching snow-sports.



SIERRA PACIFIC ORTHOPEDICS®

Visit Spoc-Ortho.com

The Strength of Experience.

Be Seen QUICKLY for All Your Orthopedic Needs

Injuries to the bones, joints, and muscles hurt.

When you’re hurt, a long ER wait time is too much. You need quick, specialized care from an orthopedic and sports medicine expert. When those injuries happen, be seen right away.

ORTHOPEDIC
URGENT
CARE

Herndon Campus - Mon - Fri 8 am - 4 pm Sat - Sun 9 am - Noon
1630 East Herndon Avenue, 1st Floor Fresno
Clovis Campus - Mon - Fri 8 am - 4 pm
2151 Herndon Avenue, Suite 105 Clovis

Winter Sports: Orthopaedic surgeons share injury prevention tips

Wear appropriate protective gear, including goggles, helmets, gloves and padding.

Check that equipment is working properly prior to use.

Drink plenty of water before, during and after activities.

Pay attention to warnings about upcoming storms and severe drops in temperature.

Never participate alone.

For more information, visit OrthoInfo.org



Request an Appointment (559) 256-5200





Variety of Food Selections for Those Out and About in the Region



Hungry Hut



Loma Vista Food Mart and Fuel



The Trading Post



Big Creek General Store



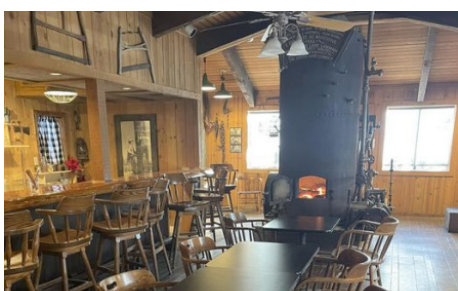
Pizza Factory - Prather



The Inn at China Peak Restaurant



Shaver Pub 'n Grub



The Sawmill - Shaver Lake

Mountain Tripper offers patrons with several delicious breakfast and lunch selections. A variety of coffee and tea selections also await you. Eat inside or outside. Free WiFi. Located next to Bob's Market. (559) 841-7106.

Hungry Hut features delicious standard, deluxe or veggie burgers, hot dogs, chicken sandwiches, a BLT, fries, plus delicious old fashioned milk shakes. You can also enjoy your favorite beer. Open daily, year 'round. (559) 841-3222.

Inn at China Peak Restaurant Start out at Jack's Bar after a day on the slopes for some delicious food and libations. Then, step next door and have dinner in their unique upscale restaurant. SkiChinaPeak.com (559) 233-2500.

Loma Vista Gas Mart offers Mexican Food, Chester's Fried Chicken, Shaved Ice and Scoops of Ice Cream, cold beer and fountain drinks. It is also known as being a well stocked convenience store. The fuel pumps are the only ones available in Shaver Lake. (559) 841-5303.

The Trading Post is Shaver Lake's oldest and one of the most popular dining houses in the mountains. Enjoy a drink at the beautiful bar and then sit down to great food, their top priority. Indoor and outdoor seating is available. (559) 841-5394. ShaverTradingPost.com

Shaver Lake Restaurant at the Point is an upscale establishment with indoor dining as well as sitting on the deck overlooking beautiful Shaver Lake. Enjoy lunch and dinner. Enjoy a game of pool, a full bar and live musical performances. (559) 841-5329

Shaver Lake Pizza is very popular on the mountain. The staff prepares all items with fresh made ingredients. Lots of beverages, including beer and wine are available. Offering great Calzones, salads, hot sandwiches and appetizers. ShaverLakePizza.com. (559) 841-7249

Short Horn Bar and Grill is considered the favorite place in town for locals to meet, eat, drink, dance and chat. This facility has the only pool table in town. (559) 841-6464. Visit ShortHornBarandGrill.com.

Shaver Pub 'n Grub has atmosphere, drinks, fish & chips, burgers, pastrami sandwich and more.



Shaver Lake Restaurant - At The Point

Family friendly with a great menu. Full bar. 4 TV's with Direct TV NFL Sunday Ticket. (559) 841-4411. ShaverLakePubnGrub.com

Pizza Factory - Prather features "real hand tossed pizza", delicious salads, a variety of pasta, plus hot and cold sandwiches. A variety of cold beer, wine and fountain drinks are available. Lots of indoor seating and arcade games! (559) 855-2800.

Big Creek General Store on Point Road in Big Creek, features delicious meals and has outdoor seating available, weather permitting. Naturally it also carries everything you would expect in a general store. (559) 839-3332

Velescos Mexican Restaurant in Prather features a great selection of delicious Mexican style meals. Call ahead and order a breakfast burrito to eat on the way up the mountain or be sure to drop in for dinner on the way home. (559) 855-6565

Subway Sandwich Shop is located in Prather in the Canyon Fork Shopping Center. Select from a tempting array of sandwiches or salads. Don't forget the chips, cookies and your favorite beverage. You can stop in for a breakfast selection or lunch treat for later on your way up to the mountains. (559) 855-7827.

Buckhorn Bar and Grill is located midway on the slopes at China Peak Ski Resort. The popular facility offers delicious food, especially pizza, and your favorite libations. SkiChinaPeak.com (559) 233-2500.

Lakeshore Saloon and Grill is located at the popular Lakeshore Resort on Huntington Lake. Enjoy a wide variety of tasty food and beverages while watching your favorite NFL team in action. Check the Lakeshore-Resort.com website for details on musical entertainment. (559) 893-3193.

Sawmill Restaurant is open for weekend dining on Friday, Saturday and Sunday. This facility has always been known for great food. Check Facebook or email thesawmillshaverlake@gmail.com for updated menus items and further details.

Shaver Lake Coffee and Deli offers chunky bread, grab and go burritos and a variety of deli lunch items. Several coffee drinks are available. Sit indoors or outdoors. (559) 841-3555.



Subway Sandwich Shop - Prather



Shaver Lake Pizza



Falcon Junction - Prather



Buckhorn Bar and Grill



Mountain Tripper



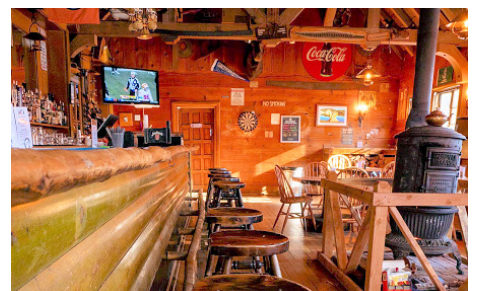
Short Horn Bar and Grill



Shaver Lake Deli



Velescos Mexican Restaurant - Prather



Lakeshore Resort Saloon

You Are Required to Carry Snow Chains When Traveling in Winter

If you are planning to visit regions offering winter activities like Yosemite National Park, the Shaver Lake area or the Kings Canyon and Sequoia National Parks, you need to know the rules regarding snow chains and how to properly use them.

Snow chains or cables are devices fitted to a vehicle's drive tires. They add traction when driving through snow and ice. They are usually purchased to match the tire size (diameter and tread width).



Vehicle Codes regarding chains and cables are written to keep you safe on the road.

From November 1 to April 1 in California, all vehicles are required to carry tire chains (or cables) when they enter a chain control area, even if it isn't snowing at the moment.

Consequences of not having them in those areas could include fines and charges for damages from an accident.

You might also have to pay towing fees if a law enforcement officer stops you and decides the safest thing to do is to have your vehicle towed out of the snow area.

A drive that starts out on a sunny afternoon along the Central Coast or further inland could take you into a situation where you'd not only need chains, but you'd need to put them on in a hurry. Or you could drive to your destination and encounter little snow on the way, but wake up in the morning to a blizzard.

California's winter weather is inconsistent, with wet years and dry years. In general, it will probably snow sometime during the winter in the mountains. It could snow as early as October. By late April, snow season is usually over.

For advance planning, you may want to know what the chances of snow falling. Search online for any of your favorite weather apps but be sure to pick a weather location at the highest elevation you plan to visit.

For up to date road conditions and closures you can follow Caltrans on their website or get their app for your mobile device.

The following are the California DMV levels of snow chain requirements. Requirement One (R1): Chains, traction devices or snow tires



The CHP is very active in monitoring chain control during the winter months. Without the proper use of chains, vehicles can easily slide over the center line into on coming traffic.

are required on drive axle of all vehicles except four wheel/all wheel drive.

Requirement Two (R2): Chains or traction devices are required on all vehicles except four wheel/ all wheel drive vehicles with snow-tread tires on all four wheels.

(NOTE: 4 wheel/all wheel drive vehicles must carry traction devices in chain control areas.)

Requirement Three (R3): Chains or traction devices are required on all vehicles, there are no exceptions.

Regulations require that you MUST carry chains when driving in designated chain control areas, marked by a sign that says, "CHAINS REQUIRED" - even if you are driving a four-wheel-drive vehicle.

During a snowstorm, Caltrans or the CHP may close the roads to all motorists who don't have chains on their tires. And in the rare instance

that you got in without chains and snow starts when you didn't expect it, you might get a traffic ticket, and/or your vehicle could be towed out of the snow area at your expense.

You can buy chains at auto parts stores, tire companies and sporting goods stores. When you buy your chains or cables, ask someone to show you how to put them on. Then try it yourself.

According to CalTrans, you need to install your chains before you reach a checkpoint, which will be about within a mile after passing a "Chains Required" sign. Pull off the road on the right to do that.

If chains are required, the speed limit automatically changes to 25 to 30 miles per hour. After you pass the End of Chain Control signs, find a safe area to get off the road and remove them.



China Peak is one of a few California ski resorts that provide space for those with RVs that wish to rent a space while they take advantage of the mountain resort they are visiting.

Enjoy a Few Days in China Peak's RV Camping Location in Back Parking Lot

China Peak Mountain Resort allows RV parking on site. No RVs will be allowed to enter between 8 am - 5 pm on weekends or holidays, no exceptions.

Rates are \$64 per night per space non-holiday, \$72 per night on holidays*. Rates are also subject to a 12% resort fee.

Weekend stays require a two-night minimum. Holiday periods require a three-night minimum.

Sixteen RV spaces, each 15' wide to allow for pop-outs and safe distances between vehicles are available with 30 amp electrical hookup.

All tow vehicles must park opposite of their RV along the bank of

East Lot #1.

RV guests must check in to sign a policy agreement at the Inn at China Peak's front desk prior to parking.

At times, after a major snowfall event, RVs may not be allowed for a period during or following a storm or cancel reservations. It is imperative we have our parking lots 100% free of all vehicles.

For reservations or more details, please call the Inn at China Peak at (559) 233-1200 or email cpinn@skichinapeak.com.

*Holiday dates are 12/26/25 through 12/31/25, 1/1/26 through 1/5/26, 1/18/26 through 1/20/26 and 2/15/26 through 2/17/26.



Small Enough to Appreciate You - Big Enough to Serve You



(559) 855-4171



on the way up or down the mountain!



We have everything you need . . . fresh hot coffee and beverages, tasty and filling breakfast burritos, made to order deli sandwiches and fresh baked pastries.

29424 Auberry Rd., Prather
At the Canyon Fork Center, Auberry Rd. and Hwy 168
Visit Us online at MarValFoodStores.org



Major High Sierra Ranger District Cross Country Ski Trails to Enjoy

The High Sierra Ranger District has several cross-country ski trail heads along Highway 168 that provide access to eight designated and marked ski trails.

Coyote Nordic Trail Head

Located about 11 miles north of Shaver Lake - west side of 168.

Vault toilets and trail information are available. Trails in this area offer novice and experienced skiers terrain variety and scenic views.

Snowshoers and hikers are asked to walk to the side of the Nordic ski track. This area is closed to all motorized vehicles during the winter.

Eagle Trail • (Easy) • 5 miles

Trail follows the road to Shaver Lake Vista, there is a panoramic view of the Shaver Lake Basin.

On a clear day, skiers may view the Coast Range across the Valley.

Marmot Trail • (Difficult) • 2.2 miles

Trail follows a road and trail system for most of its length, but allows the skier to do some cross-country for a section of the route between the N7 and N11 location markers.

Trail is rated more difficult with some steeper grades to negotiate.

Coyote Loop • (Difficult) • 6 miles

Extreme trail follows road and trail around Tamarack Mountain area. Scenic vistas provide views of Red Mountain, Huntington Lake, Kaiser Ridge and Shaver Lake ar-

reas. The trail is rated most difficult due to the length and steeper grades.

Grizzly Trail • (Difficult) • 5.7 miles

Trail follows road and trail systems to east of Tamarack Mountain. You cross Coyote Trail after three miles. Here skiers may ski to trail head by other routes. Rated more difficult - length and steeper grades.

Tamarack Ridge

Nordic/Snowmobile Trail Head

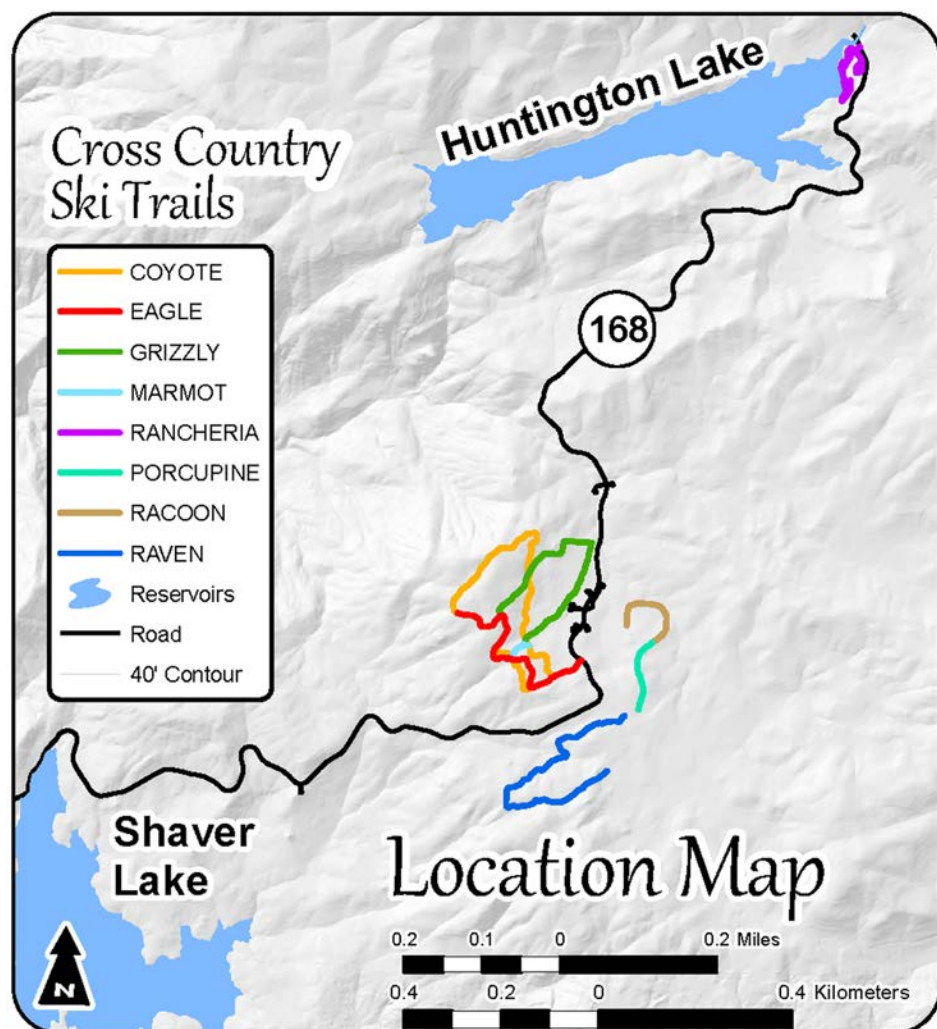
Tamarack Ridge Nordic/Snowmobile Trail head is about 11 miles north of Shaver Lake on east side of 168. Vault toilets and trail information are available at the site.

Trails in this expansive area offer both the novice and experienced skier a variety of terrain and scenic viewpoints. This area is open to both motorized and non-motorized use during the winter. Ski trails are marked with blue diamond-shaped markers. Over snow vehicle routes are marked with orange diamond-shaped markers.

Porcupine Trail • (Difficult) • 4.0 miles

Trail follows road and trail near the South Fork of Tamarack Creek.

Trail passes scenic vista in massive Kaiser Ridge area. At the N4 location marker, skiers have the option to return to trail head via same route, Forest Road 9S23/Chipmunk OSV (over-snow vehicle) trail, or by navigating cross country.



Raccoon Trail • (Difficult) • 4 miles

Trail follows road and trail near South Fork of Tamarack Creek. Trail loops within 200 feet of the South Fork of Tamarack Creek. Rated more difficult due to the length and steeper grades along the way.

Raven Trail • (Difficult) • 4.4 miles

Trail follows road and trail to southwest of trail head and accesses a Shaver Lake view. Rated most difficult - length and steeper grades.

Rancheria Trail • (Easy) • 1.5 miles

Trail is located within the Rancheria Campground on Huntington Lake on the west side of 168.

Trail follows campground roads via several short loops. Provides Huntington Lake access. Beware of thin ice on the lake.

The China Peak Times thanks the U.S. Forest Service for the information used to present this information.

Stay the night.

Wake up on the mountain.

Spend the night slopeside and wake up just steps from the lifts, for early morning corduroy and fresh tracks. The Inn at China Peak offers affordable accommodations with the classic lodge-style JW's Restaurant and Bar right downstairs. For availability or to book, call or visit skichinapeak.com.

(559) 233-1200



CHINA PEAK

OWN WINTER.

China Peak’s Own MacGyver, Neil Buller Wins the CP “Mike Award”

Every resort has one, *a MacGyver*, and we are no different at China Peak. Neil Buller is that exact guy for us, and the 2024-25 recipient of our prestigious “The Mike” award.

“The Mike” named after long time Mountain Manager, Mike Cornell, honors those who show an exemplary job in the mountain operations aspect of China Peak. Neil and Mike have numerous things in common. From their enormous hand size, to smoking a pack a day, and regularly being outside in a blizzard in a t-shirt.

As a matter of fact, Mike trained Neil on snow-cat operations over a decade ago. These are guys that have been around the block, learned many skills along the way and never ever shy away from a problem or bad situation.

Here is a list of Neil’s roles at China Peak, undoubtedly missing some: Grooming Supervisor and lead winch cat operator, snow maker and pump house operator, snow removal operator, bike shop technician and sawmill operator. There is very little that Neil has not and cannot do.

Born and raised just outside town in Sanger, Neil is a lifelong skier of China Peak. This will be his 43rd season skiing or boarding, and aside from one close call (that you

will have to ask him about), he has stayed injury free over all those years on the slopes.

Just like Gilmore had his happy place, Neil has his out in the snow. Aside from the mountains, Neil



Neil Buller is a “jack of all trades” at China Peak is the winner of “The Mike Award”.

considers himself a novice sailor and spends plenty of time out on Huntington Lake, often with some of the other China Peak operators.

He also has over 6,000 miles covered on the popular One-Wheel. For perspective, that is across the entire country and back, believe it!

In his own words: “It is a privilege to work with a great team and be connected to the Mike award.” Congratulations to Neil, the man of many talents, well deserved.



CALZONES | SANDWICHES | WINGS | BEER

559-841-7249



#SUPPORTLOCAL
Open 7 days a week!
shaverlakepizza.com
41820 Tollhouse Rd * Shaver Lake, CA 93664



MID VALLEY DISPOSAL
www.midvalleydisposal.com

Mid Valley Comes in Many Sizes

Scan here to learn more



Winter Weather Pick Up

Winter weather may delay services for mountain communities due to snow, ice, or road hazards.

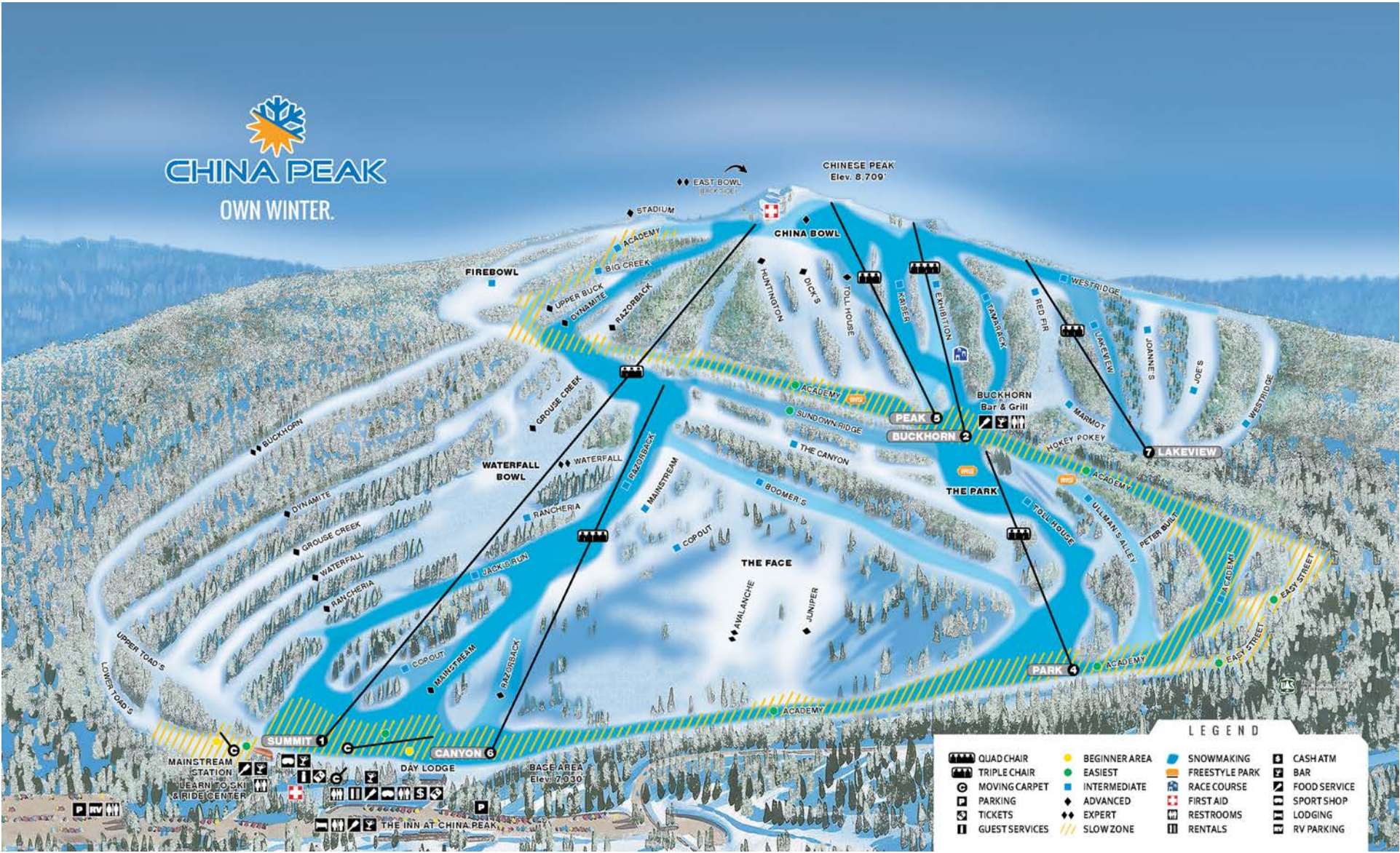
Tips for Service:

1. Allow extra time for collection.

2. Keep carts/bins accessible and clear of snow.

3. Ensure vehicles aren't blocking bins.

CHINA PEAK TIMES



Chair 1:

- | | | | |
|----------------------|------------------------|------------------------|----------------------|
| Academy - Upper | Academy - Middle | Big Creek - Upper | Jack's Run - Upper |
| Jack's Run - Lower | Buckhorn - Lower | Buckhorn - Upper | Dynamite - Lower |
| Dynamite - Upper | Mainstream - Lower | Razorback - Middle | Grouse Creek - Lower |
| Grouse Creek - Upper | Rancheria - Lower | Rancheria - Upper | Razorback - Upper |
| Razorback - Lower | Waterfall Bowl - Lower | Waterfall Bowl - Upper | |

Chair 2:

- | | | | |
|------------|--------|--------------|--------------|
| Exhibition | Kaiser | Red Fir East | Red Fir West |
| Tamarack | | | |

Chair 4:

- | | | | |
|--------------------|------------------------|------------------------|------------|
| Academy - Lower | Easy Street/Lower | Easy Street/Upper | Peterbuilt |
| Tollhouse - Middle | Ullmanns Alley - Lower | Ullmanns Alley - Upper | |

Chair 5:

- | | | | |
|------------|-----------|------------|--------|
| China Bowl | East Bowl | Huntington | Dick's |
|------------|-----------|------------|--------|

Chair 6:

- | | | | |
|----------|------------------|-------------------|-----------------|
| Arroyo | Canyon | Tollhouse - Lower | Cop Out - Upper |
| Echo | Face - Avalanche | Face - Juniper | Parkway |
| Boomer's | Skid Row | Sundown Ridge | |

Chair 7:

- | | | | |
|----------|-------------|----------|--------|
| Joanne's | Hokey Pokey | Lakeview | Marmot |
| Joe's | Westridge | | |

Kids Carpet:

Boulder Carpet:

Juniper Carpet:



Volunteer With Fresno Sheriff's Search and Rescue Organization

The Fresno County Sheriff's Search and Rescue Mountaineering Team was formed as an auxiliary unit of the Fresno County Sheriff's Office in 1982.

It is a non-profit, 501(c)(3) organization of diversified volunteers, formed to augment the Fresno County Sheriff's Office during search and rescue operations not only in Fresno County but California too.

Mission Statement

"To provide highly skilled and dedicated volunteers to assist the Fresno County Sheriff's Office and other agencies requesting mutual aid in search and rescue operations."

SAR Team members are all trained in a variety of search and rescue disciplines including: orienteering, tracking, wilderness/winter survival, first aid/CPR, swift water, high/low angle rescue, helicopter safety, search techniques and search management.

These skills facilitate the SAR Team's ability to respond to any number of urban and wilderness emergencies.

Come Work at China Peak for Good Jobs and Some Really Great Perks During Your Time Off

Working winters at China Peak is a great gig. As a customer service professional and employee at China



Working at China Peak can be very rewarding, and includes some great perks!

They train constantly, as these skills perish with time. They earn nothing, expect nothing, and are grateful for searches that end well, although they know that does not always happen.

Each team member is responsible for providing all of their personal equipment to be mission-ready. The cost of hiking apparel, boots, backpacks, sleeping systems, food, etc., is all donated by each member, typically costing \$2,500 each.

The SAR team members donate thousands of service hours participating in Search and Rescue Operations in Fresno, Madera, Tulare and San Luis Obispo Counties, as well as Yosemite, Kings Canyon and Sequoia National Parks.

Naturally, the SAR team members donate thousands of service hours participating in Search and Rescue Operations in Fresno.

But, they also assist other agencies like Madera, Tulare and San Luis Obispo Counties, as well as Yosemite, Kings Canyon and Sequoia National Parks.

Peak, you will enjoy more incentives and benefits than ever before including:

Ski and board for free. Private ski days begin in January, just for staff and friends.

Food and sport shop discounts and some dependent privileges at China Peak. On site staff housing available for most jobs.

Big News! China Peak has been rated by ski industry insurance companies the "safest ski resort in America for staff members"!

Those interested are encouraged to Apply Online at SkiChinaPeak.com or in person at the resort.

China Peak Mountain Resort is an Equal Opportunity Employer.

To contact the Employee Relations Department, please call us at (559) 233-2500 or email us at hr@skichinapeak.com.



Several members of the Search and Rescue team on horseback begin to conduct a search in the wilderness region of the Sierra National Forest above Huntington Lake.

Information on Joining the Team

The Search and Rescue Mountaineering Team is always looking for volunteers with a love of the outdoors and a passion for giving back to their community.

Caution, this is a major commitment! Members are required to participate, to hone skills, keep those skills on the cutting edge, commit to regular trainings, be ready to mentor new recruits, walk out the door on a moment's notice to search for someone.

This is 100% commitment to the

folks in the community. Members will be on call 24/7/365. They won't get paid a cent and must love this work. The men and women of this group are the elite. They become friends for life. **They are a TEAM.**

If you have something to give. Good They need you! Just apply.

Download and fill out the document, "Member-application" at this website: <http://www.fresnosar.org/Resources>. Follow their directions from that point. Get on board and then stand ready, 24x7x365 for the next call.

2nd Annual Banked Slalom Race
February 8 MT HIGH
March 1 CHINA PEAK
March 8 BEAR VALLEY
March 22 DODGE RIDGE
 REGISTER ONLINE AT THECALIPASS.COM

Sponsors: BEAR VALLEY, DODGE RIDGE, CHINA PEAK, VOLCOM, 688, NITRO, ELECTRIC, ROXY, K2, DRAGON, WHITESPACE, GoPro, LIB TECH, BENT-METAL, SKULLCANDY, DAKINE, NIXON, SIGNAL, OKAI, TURTLEBOX.

FALCON JUNCTION

5 am 11 pm DAILY

More than just a gas station.

Full Convenience Store • ATM
 Coffee Bar • Beer Cave
 Camping Supplies • Knives
 Fishing Tackle • Live Bait

Fresh Breakfast Burritos
 Harris Ranch Burgers
 Freshly Made Deli Sandwiches

French Fries
 Krispy Krunchy Chicken
 Ice Cream Cones

(559) 855-8800
 29477 Auberry Rd., Prather

PRINTING AND EMBROIDERY

SIGNS - BANNERS - LASER ENGRAVING

559-325-3400

TSHIRTPRO.COM

Caltrans' Crew 655, Dedicated to Your Safety on Highway 168

A new day, a new shift. The crew grabs supplies for the day: a thermos of hot coffee, breakfast burritos, jerky for a quick snack later, dry gloves and any essentials that might make the shift more comfortable.

This is no 8-5 shift, in fact this is no eight-hour shift; the days are long and cold, and the nights are even colder.

Weekends don't exist and neither do holidays. Mother Nature dictates when this crew gets to take a



Pay careful attention while driving where Caltrans' crews are working on the road.

well-deserved break and some years she is more generous than others.

Crew 655 also known as the Shaver Lake Crew maintains over 120 lane miles on State Route 168 between Sample Road and Kaiser Pass Road and can easily tell you

where each large boulder, sharp turn and roadway oddity is. For many on this crew, this familiar stretch of road is home.

The surrounding communities of Auberry, Prather and Shaver Lake rely on this crew. Without them, wintertime tourism would be difficult, routes to school would be inoperable and those who travel to the Valley for appointments, work and errands would be unable to complete their to-do list.

Crew 655 consists of at least 12 crew members (re-enforcements are brought in from other areas if needed) that split the 12 to 15-hour shifts.

During these shifts, crew members can be found manning six plow trucks, two blowers, and two graders; often the seat of some equipment never has a chance to get cold, as soon as one person exits the vehicle another enters, and work continues.

As locals and visiting tourists lay in warm beds, half of the 655 Crew is using dump trucks, loaders and blowers to remove snow from local parking lots and truck it to the outer edges of town making room for those who will seek local favorite treats in just a few short hours.

The other half of the crew can be



Many long hours, under less than ideal conditions, are logged by both the dedicated Caltrans and CHP members. Keep them safe. Slow down in winter's snowy conditions.

found sanding roadways and clearing out local snow parks for visitors who will be coming up for the day.

As the sun rises and folks descend upon the area, the crew spends a portion of the day partnering with Highway Patrol to enforce chain control at varying locations including: top of the Four Lanes, Sierra Marina or Balsam Sno-Park.

Those not working the chain control areas are out using a road grader to peel the snow pack and ice off the road and the blowers to get the snow off the road to give a safer and wider travel space for motorists.

Days prior, the crew went into Storm Protocol, the process of planning and executing last-minute repairs, culvert cleaning, weather monitoring, pothole filling, and preparations for any environmentally sensitive areas that are susceptible to flash floods or rock slides.

The crew carefully times when the storm might hit and just how much time they can spend at home with families before Mother Nature calls them to work.

If you happen to head up to the Greater Shaver Lake region for a leisurely weekend, don't forget to show your appreciation to the Shaver Lake Crew.

The best way to acknowledge their hard work is to give them plenty of time and space to do their work and remember #DontCrowdThePlow!



You asked.
We listened.

Plans to fit your lifestyle

With our new internet only service you can enjoy high speed internet, without the need for a phone line. Enjoy seamless browsing, streaming, and gaming with our reliable broadband. Only pay for what you use.

Sign up today: (559) 868-6000

(effective date: 09/01/2024)

No Contracts or Hidden Fees,
Local Presence. Global Reach.



Learn more at goponderosa.com

Plan to Attend All the Great Events Scheduled for 25/26

NYE Torchlight Parade and Fireworks

It is an annual tradition at China Peak to ring in the New Year with a popular torchlight parade and fireworks show.

After a day of skiing on New Year's Eve head over to JW's Original Restaurant and Bar to enjoy dinner before the party makes its way to Sully's Pub at the Day lodge.



Guests can sign up to join the torchlight parade. Then join the scores of skiers and snowboarders ride down Razorback under Chair 6 and light up the mountain with a parade of flares (note that participation in the torchlight parade is limited to advanced skiers and snow-

boarders).

After the parade, the firework show kicks off, lighting up the front of the mountain as viewers enjoy it all from the Day lodge deck.

After the fireworks are finished, the party continues as Sully's Pub stays open through midnight to celebrate the New Year.

Be sure to check out a room at the Inn at China Peak so you can party all night and wake up just off the slopes to ski the next day!

China Peak Slope-style

Are you a park skier or snowboarder looking to show off your skills? Back for the 3rd year is the China Peak Slope-style. Skiers and snowboarders battle for their share of cash and prizes.

With men, women and youth categories in both ski and snowboard there's a division for everyone.

Participants can expect to compete in a variety of park features such as rails and boxes in addition to jumps.

The top 3 finishers in each category will walk away with cash prizes! Plus a free raffle for all who compete to win prizes from the event sponsors. This event usually takes place in March.

Pond Skim

Everyone's favorite spring event



Park skiers and snowboarders looking to show off their skills will be thrilled that the China Peak Slopestyle is scheduled again this season. Come win some cash and prizes!

returns once again. Will you be brave enough to venture across the pond in hopes of making it out dry?

The Pond Skim and Luau party are annual traditions at China Peak, usually happening at the end of March or beginning of April depending on weather.



For the past few seasons the Pond Skim has been held at China Beach located outside Mainstream.

This location in the base area makes for a great viewing area for skiers and non-skiers alike to cheer on the brave contestants, plus only steps away from the food and drink offerings at Mainstream.

Pass Holder Appreciation Day

Pass holders keep your eyes peeled for the annual pass holder appreciation day, usually happening towards the end of the season in

March or April.

Pass holders can enjoy free lunch which is usually served on the Day lodge deck, weather permitting.

Pass holders will also enjoy live music and a pass holder only raffle for China Peak swag. In addition, pass holders get free waxing in the repair shop, limit one per person.

LepCon

What better way to enjoy St Patrick's day weekend than a party at Buckhorn. Dress up in your best leprechaun costume for a chance to win prizes, plus everyone who dresses up gets entered into a free raffle. DJs, green drink specials, dancing and more fun



Regional Businesses Look to Add Seasonal Employees to Their Staff

Working in the region can be very rewarding for those that love their time in the mountains.

Nearly every restaurant, lodging facility, marina, market and other service oriented businesses are always seeking new seasonal employees to help service customers.

Typically the age range for staff members starts at 16, with a student work permit. Lots of folks in their 70s are happily employed by regional organizations.

Snowbirds are very popular with employers since they come with their own housing! Yes, housing for seasonal employees or anyone working in the region can be a problem.

Many of the jobs available don't require any special skills. Others do. The most important thing for prospective employers is that you can be depended upon to show up for

your shift. Even seasonal staff members are vital for day to day operations. Each employee is important.

These jobs can be in Big Creek, Dinkey Creek, Huntington Lake, Shaver Lake, and the various backcountry resorts or pack stations.

Your duties may change almost from minute to minute as you are plugged into a variety of jobs that are important to your employer.

Make sure once you have made a commitment for a job, that you stay in that position for the mutually agreed upon time frame.

The benefits of working in the mountains include having the great outdoors surrounding you when you are on your own time.

If you enjoy fishing, hiking, biking, mountain climbing, and hanging out with new friends, this could be a great move for you!

**BECAUSE
LEGACY
IS THE ULTIMATE
LUXURY**

YOU'VE BUILT SOMETHING EXCEPTIONAL.
WE'RE HERE TO HELP ENSURE IT ENDURES —
WITH PRECISION, PRIVACY, AND CARE.



**Schedule Your Private Estate Planning
Consultation Now, to Secure Your
Legacy with a Trusted Advisor.**

LAWVEX
www.lawvex.com

(559) 491-2091



Day Lodge Houses Rental Shop and Repair Facilities

Both the Rental Shop and Repair facilities are main components of a well oiled resort operation. Guests want to get in and get out as fast as possible so they can enjoy the slopes.

“For the convenience of guests that rent from us, we operate out of the Day Lodge,” said Rental Shop Manager, Corinthian Jones.

“Having our inventory in this location allows us to be more prepared for the busy weekends we experience during the season!”

“We have more shelving and racks to accommodate the inventory. Multiple lines allow a good flow of customers, eliminating the bottleneck that can happen between booting up and picking up your snow skis or boards.”

“We keep a very large inventory,” said Jones. “New gear offers guests better technology. Annual innovations that make your ride better, lighter, and faster, are important.”

If you are a China Peak regular, become a seasonal rental customer and bypass daily rental shop lines and pick up your equipment on site.

“We have seasonal rentals available for both skis and snowboards,” said Jones. “China Peak has a check-in, check-out system.

Fill out the required paperwork one time for the season. You will

get a seasonal rental access card.”

Pick up your equipment in the morning and drop it off in the afternoon. Use it as much as you like all season. Seasonal rentals are \$395 for ages 13+ and \$297 for children 12 and under. Rentals are subject to availability and will sell out quickly!

Call us (559) 233-2500 ext 2702.

Rental Rates		
Skis/boots/poles		
Snowboard/boots		
	All Day	Half Day
	9 - 4	12:30 - 4
Adults 13+	\$77	\$60
Child 6-12	\$54	\$42
Skis and Poles	\$69	\$53

Damage waiver is \$25.

China Peak’s full service repair shop is at the Day Lodge. The professional staff will get you ready and keep you sliding all season.

Take advantage of same day service, or leave your equipment overnight and pick up the next day!

Tuning and Repair Rates				
	Hand	Graphic Hand	Jet	
Waxing	\$20	\$25	\$14	
	Base	Stone	Hand Edge	
Edging	\$20	\$37	\$43	
	P-Tex	Edge	Parts	
Repairs	\$14+	\$48	\$9+	
	Ski Binding	Snowboard Binding		
Mounts	\$60+	\$14+		



Chad Sainsbury, a long time fixture at China Peak, was recently promoted to Snow Surfaces Manager. He oversees grooming, snow-making, snow removal and the terrain park.

Chad Sainsbury Has Been Promoted and Is Now the Snow Surfaces Manager

The management team at China Peak is happy to say Chad Sainsbury has a new role as Snow Surfaces Manager.

Chad will continue to oversee the grooming department, while adding snowmaking, snow removal and the terrain park to his responsibility list.

Chad is the epitome of a mountain-man. He has spent most of his 30 years of life growing up and working at China Peak.

His dedication and care for details is second to none. He truly enjoys

being at work, day or night!

He has been an integral part of the team from his start here and now helps us with management duties.

When he’s not here working on our mountain, you can hop on a quick plane and find him doing the same exact thing in Japan.

Chad is a shining example of one who loves the life they have, and it is infectious on those around him.

Be sure to catch him parking snowcats in the early morning, or getting first laps almost every day.

95

CALS

2.6

CARBS

Michelob

ULTRA

SUPERIOR LIGHT BEER

EAT HUNGRY.



BREAKFAST, BURGERS,
SANDWICHES & BEER.

On your way home in Shaver Lake.



HUNGRY
HUT

42008 Tollhouse Rd, Shaver Lake, CA 93664



The crowds that gather at the Buckhorn Bar & Grill can be quite large on weekends and holidays as they get together for some delicious food items and their favorite libations.

China Peak’s Buckhorn Bar & Grill One of Skiing’s Most Popular Spots

The Buckhorn Bar & Grill is a great vibe created by the Food and Beverage Team at China Peak. It has quickly become the place to hang out here in the Central Sierra at Huntington Lake.

This popular venue is almost a second home to a portion of China Peak’s customers. What all the fuss about? Well they feature a full bar with every libation you can conjure up. The menu includes a great variety of delicious finger foods as well as complete meals.

On weekends the deck is alive with action, including a variety of music from local musicians.

Food and Beverage Manager Tristan Cohee says “I don’t know

where you can find the scene we’ve created here at Buckhorn, even at the largest and most popular resorts.”

“I was born into the ski business and have skied almost every resort in California. “Come on up and see for yourself. You’ll be back!”



China Peak guests take a break from the slopes to relax at the Buckhorn Bar & Grill.



Simply the Best!

WeSellShaverLake.com



Beth Brown



Cathy Lauritzen



Eric Rhoads



Linda Ferrierra



Mark Haist



Teresa Goodnight



Kim Ashbrook



Tim Young



Jennie Robinson



Alex Gaona



JacylN Elming



Judy Errecart



Bianca Solidum



Brett Taylor

Phone: (559) 841-2600
40885 Shaver Forest Road, Shaver Lake

License # 01906844



Cali Pass Gives Access to Four Challenging California Ski Resorts

(continued from page 1)
and it's promising a winter to good times in the snowy paradise of California and beyond!

Cali Pass holders can enjoy unlimited skiing and snowboarding at Bear Valley, China Peak, Dodge Ridge, and Mountain High.

They include the snow-covered wonderland of Tahoe to the breathtaking peaks in Alaska, Colorado, New Mexico, Montana, Oregon, Washington, and Wyoming.

The California Cali Pass makes this dream a reality. Say goodbye to the stress of navigating through hordes of people and traffic jams at popular winter resorts.

A Better Way to Winter



Enjoy unlimited skiing & snowboarding at 4 classic California winter resorts **Plus** three days each at 14 Powder Alliance resorts worldwide including Sierra At Tahoe and Mt. Shasta Ski Park.

That's up to 42 **FREE** tickets! All this **Minus** the crazy traffic, huge crowds, and absurd prices.

Take advantage now and don't miss out on this fantastic opportunity to make the 2025/26 winter season the most memorable one yet.

Your Cali Pass will unlock exciting skiing and snowboarding adventures for you in places of which you may have only dreamed.

The 2025/2026 Cali Pass prices:

- Adult Pass - Ages 23-69 - \$899
- Senior Pass - Ages 70-74 - \$835
- Military Pass - Active/Vet - \$629
- Senior+ Pass - Ages 75+ - \$159
- Young Adults - Ages 13-22 - \$835
- Child Pass - Ages 6-12 - \$489
- Child Pass - 5 & Under - 2 Free w/paying adult

From Base Pass Upgrade - Varies
Use Affirm to purchase a Cali Pass for as low as \$0 down and 0% APR, and split the cost over 4 months.

Bear Valley Resort

Nestled off scenic highway 4 in the Central Sierra Mountains and Stanislaus National Forest, Bear Valley

Mountain Resort offers world-class terrain at 7,000 feet. Easily accessible from all of Northern and Central California, a retreat for both beginners and experts seeking space and breathtaking views. At Bear Valley, you'll find the big mountain experience with small town vibes.

Mountain features nine lifts, 75 trails, 1,680 Acres, 1,900 vertical drop and 359 inches of annual snowfall. Details at BearValley.com

Cali Pass features at Bear Valley

Up to 50% off tickets (1 Per Day)
All Pass Holders purchase at Guest Services.

- 10% Off F&B (Non-Alcoholic)
- 10% Off Retail (Non-Sale Items)
- Show Your Cali Pass at checkout
- 20% Off Lessons (Adult Group, Weekday, Non-Holiday)
- Purchase at any Ticket Window.
- 20% Off Mountain Bike Lift Tickets
- Purchase at any Ticket Window
- 30% Off Lodging at Bear Valley
- Show your 25/26 Cali Pass at check-in
- 30% Off Lodging at China Peak

Book online at BearValley.com, use Promo Code CALI at checkout.

China Peak Mountain Resort

Central California's destination resort overlooking beautiful Huntington Lake. One of the Sierra's 10 largest resorts with trails up to 2.5 miles in length and a handful of the steepest groomed ski trails in California. Even on big days, lift lines are nearly non-existent.

Mountain features 11 lifts, 47 trails, 1,200 acres, 1,679 vertical drop and 325 inches of annual snowfall.

Cali Pass features at China Peak

Up to 50% Off Tickets (1 Per Day)
China Peak Pass Holders purchase at any Ticket Window. Cali



Pass holders from other resorts, please purchase your discounted tickets at Guest Services.

- 10% Off F&B (Non-Alcoholic)
- 10% Off Retail (Non-Sale Items)
- Show Your Cali Pass at checkout
- 20% Off Lessons (Adult Group,



This young lady has taken advantage of the Cali Pass perks as she takes a rest from the excitement she is experiencing on the slopes! Get your own Cali Pass for the season.

- Weekday, Non-Holiday)
- 20% Off Mountain Bike Lift Tickets
- Purchase at any Ticket Window
- 30% Off Lodging at China Peak
- Book online at SkiChinaPeak.com
- Use promo code CALI at checkout.
- Show Cali Pass at check-in

Dodge Ridge



The most easily accessible resort in the Sierras. Close to most major cities from Santa Cruz to San Jose. You'll think you're in Tahoe... minus the traffic and crowds.

Mountain features 10 lifts, 70 trails, 800+ acres, 1,600 vertical drop and 350 inches of annual snowfall

Cali Pass features at Dodge Ridge

Dodge Ridge Pass Holders purchase at the ticket windows. Up to 50% Off Tickets (1 Per Day)
10% Off F&B (Non-Alcoholic)
10% Off Retail (Non-Sale Items)
Show Your Cali Pass at checkout
20% Off Lessons (Adult Group, Weekday, Non-Holiday) Call 209-965-3474 to reserve your lessons
20% Off Mountain Bike Lift Tickets
Purchase at any Ticket Window
30% Off Lodging at China Peak
Book at DodgeRidge.com Use Promo Code CALI at checkout

Mountain High Resort

Mountain High is Southern California's closest winter destination located just 90 minutes from downtown Los Angeles. The area consists of two separate mountains

(East Resort & West Resort) offering a wide variety of lifts, trails, and world-class terrain features, all with a California vibe.

Night skiing and riding is available Wednesday to Sunday peak season. Snow-making covers more than 80% of the resort.

Mountain features 12 lifts, 50 trails, 500 acres, 1,600 vertical drop with 120 inches of annual snowfall

Cali Pass features at Mountain High

Up to 50% Off Tickets (1 Per Day)
Mountain High pass holders will be emailed coupon codes. Redeem them at the resort.

Cali Pass holders from other resorts, please purchase your discounted tickets at the VIP window at the West Resort.

- 10% Off F&B (Non-Alcoholic)
- 10% Off Retail (Non-Sale Items)
- Show Your Cali Pass at checkout
- 20% Off Lessons (Adult Group, Weekday, Non-Holiday) Call 760-



316-7863 to reserve your lessons.
20% Off Mountain Bike Lift Tickets
Purchase at any Ticket Window
30% Off Lodging at China Peak
Book online at MtHigh.com, use Promo Code CALI at checkout.

Fresno Ski Club Traveling To Winter Park, CO for 2025/2026

It is a little-known fact that the Fresno Ski Club is one of the oldest ski clubs in the United States. The group was founded in 1934 and incorporated in 1937.

The Fresno Ski Club has earned an excellent reputation for offering outstanding domestic and international ski ventures for their members through the decades.

For the 2026 ski season, members of the club will be traveling to the fantastic skiing destination of Winter Park, CO in January, followed by the annual trip to Mammoth Mountain, CA in March.

And, as they have for many years, the Club will be hosting its ever-popular monthly Fun Days at their home resort, China Peak.

The Club is an extremely friendly group. Throughout its history, the Club has been a great venue for people meeting people with similar interests, resulting in long lasting friendships. No one ever skis alone.

Whether you are an experienced and avid skier, or returning to the sport years later, the Club is com-

prised of all skill levels of skiers and snowboarders.

The group ranges from beginner and novices to the highly skilled. There is no need for anyone to be shy, even if you have forgotten how to snowplow. Members are always willing to be a ski buddy for you so you can observe or emulate, an experience from which you will ultimately find improves your skills and safety on the slopes.

It's not all about skiing. When the snow melts the Fresno Ski Club members are active off the slopes as well, offering social get-togethers at private home and restaurant venues, day hikes, golf outings, lakeside picnics, community outreach and philanthropic activities, fellowship and more.

Affiliated with Far West Ski Association, Fresno Ski Club members have access to additional economical ski, scuba and sight-seeing trips to world-wide destination resorts.

Visit the club's current website at www.fresnoskiclub.com, or find us on Facebook. The Fresno Ski Club welcomes you!



Members of the Fresno Ski Club enjoy a day of skiing at The Matterhorn, Zermatt Switzerland, in February. 2024. Come join the organization and enjoy great outings like this.

Medical Care Facility in Prather Run By Central Valley Indian Health Group

Central Valley Indian Health Clinic in Prather, has been around since 1995 serving Native American families and Mountain Communities in the surrounding Fresno County area. The Clinic is open Monday-Friday 8 a.m. – 4:30 p.m., closed 12-12:30 p.m. for lunch. It is closed on weekends and holidays.

The Prather Clinic is currently the only medical facility serving the Prather, Auberry, Big Creek,

Huntington Lake, Shaver Lake, and Tollhouse areas. The facility provides primary medical and dental services. There are no have medical x-ray or pharmacy services on site. Most PPO insurances, in addition to Anthem & Health Net Medi-Cal plans are accepted.

Central Valley Indian Health Clinic
29323 Auberry Rd., Prather
559.855.5390
www.cvih.org



Traveling Tips for To Keep You Safe During Outdoor Snow Play Winter Adventures

What a great morning! It rained all night in the Central Valley and it is snowing at China Peak. The ski report lists two feet of powder is waiting for you on the slopes and more is expected during the day.

Thanks heavens it's a weekend. You've made up your mind, you're going skiing and you don't have to figure out an excuse to call in sick!

Obviously, you need to carry chains and drive carefully when venturing into the mountains during the winter.

For instance, you know your vehicle is in good condition. The tires are properly inflated. You will keep the fuel tank at least half full to avoid gas line freeze-up. You have your cell phone and emergency numbers. You have packed blankets, kitty litter, a shovel, gloves, hats, food, water and any needed medication in your vehicle.

You know that if you become snow-bound, stay with your vehi-

cle. It provides temporary shelter and makes it easier for rescuers to locate you. Don't try to walk in a severe storm. It's easy to lose sight of your vehicle in blowing snow and become lost. Don't over exert yourself if you try to push or dig your vehicle out of the snow.

Tie a brightly colored cloth to the antenna or place a cloth at the top of a rolled up window to signal distress. At night, keep the dome light on if possible. It only uses a small amount of electricity and will make it easier for rescuers to find you.

Run the engine and heater just long enough to remove the chill and conserve gasoline. Make sure the exhaust pipe isn't clogged.

If blocked, the exhaust fumes could cause deadly carbon monoxide gas to leak into the vehicle with the engine running.

But, why worry. You're prepared! Hit the slopes and enjoy yourself!

Problems Insuring Mountain Homes?

Have you been denied or dropped due to brush or Wildfire areas?

I Have Your Solution!

Family Owned and Operated for 60 years!

"We have specialized in mountain homes, brush areas and coastal properties for the past 10 years."

If you have suffered a loss and will be rebuilding - Call me.

If you are a survivor of a wildfire and want a fresh pair of eyes to review your situation - I'm here for you.

Not sure how insurance works - I will explain it to you

If you have been without insurance - No problem.

Home and Auto Discounts - Yes, just ask me

Devin Wilson Insurance Services

(559) 782-0366
devinwilson1@allstate.com

Race Team Helps Kids Build Ski Racing Skills, Grit and Character

Through the fundamental development of skiing, training, and teamwork, the China Peak race team and the coaches strive to create a resource for personal development for each athlete.

Teamwork, loyalty, and camaraderie are the cornerstones of the China Peak Race Team.

Kids wishing to hone their ski racing skills are encouraged to join the China Peak Race Team.



The thrill of participating in down hill racing is earned after a lot of hard training.

The mission is to develop a life-long love for the sport of Alpine Skiing. The China Peak Race Team program is designed to not only develop skiing athletes, but to pro-

mote a healthy lifestyle, enrich the child/family experience and foster a love for snow sports.

Providing alpine ski racing youth with a supportive environment of teamwork, skills development and competition.

Goals stem from a core desire to develop each athlete to reach their full potential both personally and athletically.

The organization is committed to help ski racers to achieve long-term success and enjoyment.

They must develop into great skiers first, and only then they can become great ski racers.

Through the USSA program of SkillsQuest – the coaches are committed to age appropriate progression starting with fundamental skiing skills, then developing advanced skills required to race.

By skiing with the China Peak Race Team, athletes can look forward to being rewarded for working on those things that will bring out their full potential in the long run.

Coaches track their progress so parents can see how their children are growing in all aspects of the sport.

The race team trains, weather and snow permitting, every Saturday and Sunday and major school holidays (with the exception of the 4



China Peak Race Team members get in line for their turn up the mountain. These youngsters train hard, ski well and experience personal growth as they increase their skills.

scheduled Central Series races).

Training typically runs from 8:30 am to 1:00 pm with a short lunch break. Early morning speed training is also provided on a limited basis.

Training includes skiing drills to develop fundamental ski technique and gate training to further develop technique and tactical skills.

For applications please fill out the contact form at chinapeakrace.com/contact.

The China Peak Race Team has many corporate sponsors that are much appreciated.

We are pleased to work hand-in-hand with our partners to develop strategic activation programs that allow our sponsors to leverage their sponsorship investment and achieve optimal return on their sponsorship objectives.

If you would like to become a sponsor, please call: 559-224-2313.

The Elliott House Boutique Inn

Luxury One-Bedroom Suites with Breakfast Included

Vacation Rental Cabins

Book Now

(559) 492-0444

shaverlakecabins.com

@slcabins

@shavercabins

Variety of Accommodations Offered for Winter Guests Planning a Trip to the Local Mountains



Elliott House Boutique Inn



Daddy Joe's Lodging - Auberry



Tamarack Lodge - Lakeshore



Shaver Lake Cottages



Shaver Lake Village Hotel



The Inn at China Peak



Lakeshore Resort



Moose Haven - Shaver Lake

The following regional facilities are listed for your convenience. Call ahead or visits websites to see if you can bring your furry friends!

Accommodations feature a range of amenities travelers desire. There are cozy cabins, elegant condos, bed and breakfast inns as well as full service resorts, comfortable motels, hotels, campsites, AirBnB, Vacasa and VBRO offerings.

The Inn at China Peak offers slope side lodging just a few steps from the Day Lodge and lift lines. Relax apres ski in JW's Original Bar and enjoy drink specials and tasty appetizers. Then enjoy dinner at the restaurant. (559) 233-2500 or SkiChinaPeak.com.

Elliott House Boutique Inn, near the center of the Village, has luxurious beds and cozy sitting area. They are specifically designed to ensure comfort and relaxation. Patrons are treated to a delicious home cooked breakfast. (559) 492-0444 or ShaverLakeCabins.com/en/elliott-house-boutique-inn.

Shaver Lake Village Hotel is near the end of Shaver Lake, by Ken's Market. There is an extensive array of accommodations, including hotel rooms, spacious cabins, well appointed suites and a bunkhouse. Enjoy a Continental breakfast each morning. (559) 841-8289 or ShaverLakeVillageHotel.com.

AirBnB and VBRO represent a variety of accommodations in Big Creek, Auberry, Lakeshore, Prather and Shaver Lake. To make your arrangements, contact the individual owners of these facilities through AirBnB.com or VBRO.com.

Vacasa Vacation Rentals feature the largest selection of private homes, cabins and condos in and around the Shaver and Lakeshore. Some conveniently located about five minutes from China Peak. They are all warm and comfortable. (855) 861-5757. Vacasa.com

Tamarack Motor Lodge is just six miles below China Peak. Six suites are available. Each of the units has a kitchenette, private bath and TV with cable. (559) 893-3244 or TheTamarackLodge.com.

Talahi Ranch Retreat is just 40 miles away and sleeps up to seven. Smart 48" flat screen TV, mini refrigerator, microwave, coffee and hot water maker, private bathroom, laundry facilities and private entrance. You can BBQ on the deck. Call (559) 298-3133 or make a reservation at AirBnB.com/h/talahi

Daddy Joe's - Auberry Rental homes are in the Auberry foothills. They include: Yellow House, Barn Bungalow, Flat, Bear Den, Cottage, Sweet Bear's Suite and Cub Suite. The lodging units are just 38 miles from China Peak Mountain Resort.

Reservations at 559-855-2828 or DaddyJoesLodging.com

Moose Haven - Shaver Lake Comfortable Granite Ridge Home offers modern amenities and plenty of space, with a wood-burning fireplace in the living room. The kitchen has a gas grill and is fully outfitted for all your cooking needs. Sleeps 16 in 5 bedrooms. Airbnb.com/h/moosehaven

Musick Creek Inn and Chalets are on Highway 168 as you enter Shaver Lake. Get a cozy feeling with their most adored rooms, including 10 hotel rooms, three chalets, one cabin, and one honeymoon suite. Amenities include: Breakfast, Widescreen TV, Wifi, Air conditioning, Laundry and Jacuzzi musickcreekinnshaverlake.com (559) 841 5303 or (559) 545 6904

Camp Edison is in a pine forest on the Shaver Lake shore. Select campsites are available for the winter season. Electricity and water included. A dump station is onsite. WiFi available for a fee. Open year-round. CampEdison.com.

Lakeshore Resort at Huntington Lake features remodeled rustic cabins that sleep up to four. Have a good meal and favorite drink at the Saloon. Reservations at (559) 893-3193 or LakeshoreResort.com.

Shaver Lake Cottages are at The Point. There are standard and deluxe rustic cabins available that sleep from two to six. Bed, compact refrigerator, coffee maker, microwave, a large flat screen TV provided. (559) 841-2286 or shaverlakecottages.com

Camp Sierra sits between Shaver Lake and Big Creek, featuring individual cabins of all sizes for family or friend groups. Can sleep up to 10. It is a 30 minutes to China Peak. Open year-round. (559) 893-3333 campsierra.org.

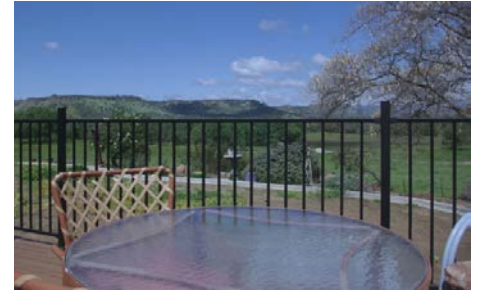
Camp Chawanakee Located 30 minutes from China Peak. Cabins contain a flush toilet, vanity, shower and kitchenette. Cabins have lights and heat. Beds have mattresses. Each cabin can sleep 7 people. There is a sitting area and a front porch. We're open year-round. 559-320-2100. seqbsa.org.

Shaver Lake Cozy Cabins comfortable, fully-equipped cabins reflecting mountain living charm. Each property stocked with the essentials. Complete commitment to guest satisfaction. Contact Amanda at (559) 841-6526 or visit ShaverLakeCabinStays.com

Shaver Lake Cabins Three cabins: Aspen Escape - Steps from town, sleeps 8; the Bungalow on Buckeye in the West Village is pet friendly; and the Silver Pine Lodge sleeps 10. (559) 492-0444 or ShaverLakeCabins.com.



Camp Edison - Shaver Lake



Talahi Ranch Retreat - Prather



The Chalet's and Musick Creek Inn



Camp Sierra - Big Creek



Shaver Lake Cabins



AirBnB - Foothills - Shaver Lake



Camp Chawanakee



Shaver Lake Cozy Cabins - Shaver



For over 10 years, the wonderful staff, sponsors and donors of the Central California Adaptive Sports Center (CCASC), have helped to provide access to skiing, snowboarding and other outdoor sporting adventures to many who have suffered mental or physical injuries.



**Make a Donation
Right Now!**

Activities: CCASC's offers lessons for persons with disabilities of all skill levels and interests, including sit-skiing, stand-up skiing, ski-biking, snowshoeing and mountaineering. Family members are en-

couraged and welcome to participate in all activities.

Availability: Winter programs are available to all persons with disabilities Thursday through Sunday, Thanksgiving weekend through April 30. Naturally these dates are dependent upon Mother Nature and China Peak Mountain Resort's opening and closing dates.

Although drop ins can be accommodated, advance reservations are strongly recommended.

Through grant funding from the Department of Veteran's Affairs Adaptive Sports Program, CCASC is able to offer lessons to Veterans with disabilities at no charge. Discounted lift tickets and rentals are available for family members.

Duration: Most of CCASC's winter activities are planned to last for a half-day or all day. Half-day programs run from 9:30 am - 12:00 noon or 1:00 pm - 3:30 pm. Full day programs run from 9:30 am - 3:30 pm.

Location: All programs take place at China Peak Mountain Resort unless otherwise designated.

Participant Support: The ratio of participants to CCASC instruc-



It is great to see all the active participants and their volunteers enjoying the thrill of winter sports together thanks to the ongoing Central California Adaptive Sports Center.

tors is normally 2:1. For some activities, such as alpine (downhill) skiing, the ratio is 1:1. In most cases, a CCASC field assistant will be assigned to the instructor to assist

with each participant.

Legal Stuff: All participants and persons associated with program activities are required to sign a liability release form.

All participants under the age of 18 must be accompanied by a parent or responsible adult approved by the parent.

The successful programs the ASC provides are inclusive to families and friends, empower our participants in their daily lives and have a positive enduring effect on self efficacy, health, independence and overall well-being.

Some discounts and scholarships are available to non-veterans. For details or to schedule a program, contact: randy@centralcaladaptive.org or call 559-593-2504.



Participants and volunteers enjoy the thrill of winter sports thanks to Adaptive Sports.

DeBenedetto's Moose Haven at Shaver Lake

**16 guests · 5 bedrooms
· 9 beds · 2.5 baths**

Make Your Reservation at
[Airbnb.com/h/moosehaven](https://www.airbnb.com/h/moosehaven)



A short drive will bring you to Shaver Lake, where you can enjoy boating, fishing, jet skiing, and more!



This comfortable home in the Granite Ridge Subdivision near Shaver Lake offers modern amenities and plenty of space for a large group or multiple families.



There is a wood-burning fireplace and comfortable leather furniture in the living room, a huge deck with forest views for outdoor dining, soaking up sunshine, and running around.



Kitchen has a gas grill and is fully outfitted for all your cooking needs. Group the kids together in the large bunk room to play games or watch movies.

the FREIGHT STATION

**Scan • Copy • Fax
Printing Services
Shipping
Drop Off For:**



**Monday - Friday 9 am - 5 pm
Saturday 10 am - 2 pm**

(559) 855-6770

**Notary
(Wed - Sat)**

29533 Auberry Road, #102, Prather, CA 93651

Diana Graue Servers As China Peak’s Ski Patrol Supervisor

China Peak Ski Patrol has an outstanding reputation as one of the states most respected patrol units.

Much of this credit is due to Ski Patrol Supervisor, Diana Graue. She was hand selected by her mentor, newly retired Rich Bailey.

With over a decade in a clinical setting and a passion for wilderness rescue, she made a career leap from healthcare to the slopes in 2024.



Huntington Lake Fire Volunteer firefighter Graue readies the “Jaws of Life” for action.

An experienced splitboarder, avalanche trainee, and blasting apprentice (yes, explosives), Diana thrives in the elements.

She trained as a Wilderness First Responder in Leadville, CO.

Graue truly hit the ground running. Now in her second year in charge of the Ski Patrol Department, she leads a highly qualified team to keep the mountain team and the guests safe.

Whether she’s riding powder, biking forest trails, climbing granite, or chasing wildflowers, Diana lives and breathes the Sierras. She’s here to help keep our community safe, we can all keep playing in the mountains we love.

In her free time, you might catch her river-guiding on the Kings River. She had an experience as a teen when her raft flipped and ended up swimming the Banzai Rapids, run on the Kings that is big, wide, and usually very forgiving.

She is also a long time volunteer, as a Firefighter and EMT, with the Huntington Lake Fire Department.

The management team is excited for her future here on the mountain. Everyone wants her to succeed in every way possible.

Please do Diana a favor, say “Hi” when you see her next. But most importantly, always ski and ride safely within your ability.

SHAYER LAKE
Norm Kato, Owner

Coffee & Deli

Call in Deli Orders Welcome

(559) 841-3555

*From 6 a.m. to 2 p.m.
Closed Tues and Wed*

**Lattes, Cappuccinos
Mochas, Espressos**

Full Espresso Bar

SERVING YOU IN THE EARLY MORNING

ENJOY BREAKFAST BURRITOS, PANCAKES, BREAKFAST SANDWICHES, BAKED GOODS AND CATERING SERVICES

Chunky Bread

Fresh Bakery Selections

COME VISIT OUR EXPANDED GIFT ITEM SELECTIONS

41758 Tollhouse Rd., Shaver Lake
(between Shaver Lake Hardware and Trading Post Restaurant)

Mouth Watering
Grab and Go Burritos
Delicious Cold
Deli Sandwiches
Hot Tri Tip Sandwiches
Burgers and Fries

LOOK FOR OUR DAILY SPECIALS!

**WAKE UP AND WARM UP!
KIDS LOVE OUR
HOT CHOCOLATE!
MID-DAY YUMMY
LUNCHES AND BRUNCHES
PACKED TO GO**

Huntington Lake Properties

**Vacation Condos, U.S.F.S. Cabins,
Private Lots & High End Homes**

Just Five Minutes from

CHINA PEAK

<p>This light filled end condo offers privacy, upgrades and beautiful rock fireplace, perfect for cozy evenings after a day in the mountains. 2/2 62792 Ski View Ln. #92 # 598158 \$342,500</p>	<p>Remodeled condo. Walking distance to pool, jacuzzi, sauna, tennis, pickleball and beach. Custom flooring, cabinetry, counter tops. 2/2 62614 Old College Ln. #12 # 636982 - \$345,000</p>	<p>Fun just outside the door! Walk to lake. Close to pool, tennis, pickleball. Enjoy sauna, jacuzzi, and volleyball. Two Trex decks. 2/2 62642 Old College Ln. #16 # 629583 - \$349,000</p>	<p>Light, bright condo, ample windows, large deck, gorgeous aspens outside the kitchen window, walk to the store, dining and marina. 2/2 62721 Huntington Vista Ln. #119 # 629463 - \$349,000</p>	<p>Only condo with full wheelchair access with elevator so anyone can enjoy the magic of the mountains. Dry heat sauna. Two decks. 2/2 plus loft. 63221 Huntington Vista #83 # 629255 - \$450,000</p>	<p>Kids can slide on their own mini sled hill right outside the door. Custom finishes. Lots of storage both inside and below. Great getaway to family adventures! 3/3 62681 Huntington Vista #111 # 630076 - \$499,999</p>
			<div><div><p>Marcia Beach Million Dollar Producer</p><p>Info and Updates. Talk/Text (559) 593-2295</p></div><div><p>Email beachmarcia@yahoo.com for current Huntington Lake Cabins, Condos, Private Lots and Custom Homes</p></div></div>		
			<div><div><p>Associate Broker Lic#00684261</p></div></div>		
<p>Panoramic views of lake and China Peak! Open floor plan, upgrades and loft. Host family and friends. Sierra National Forest is your backdrop! 3/3 63215 Huntington Vista #80 # 637259 - \$679,000</p>	<p>Own stunning home with bonus room. Lots of space for family and guests. Upgrades. Amenities. A blend of comfort, style and mountain living. 3/3 63217 Huntington Vista #81 # 634852 - \$698,000</p>	<p>Perfect for investment or multi family retreat. Amazing views with year around access. Decks, game room and garage with storage. Solar system owned. 63156 Regatta Vista Ln. # 626526 - \$2,450,000</p>			

With Short Lift Lines and Great Terrain You Always Earn the Burn With Countless Runs

(continued from page 1)

Bring your friends and/or the whole family to enjoy China Peak, from those that have just learned to walk to grandparents enjoying their retirement. When you escape to the mountains, you have a unique experience that will let you forget the busy and stressful life at home.



While the mountain is well known to Central Valley riders, Bay area and Central Coast skiers and riders should note that it is just a four hour drive from the coast between Palo Alto and Pismo Beach.

Let's talk about the mountain. With a base at 7,000 feet and a top of 8,700 feet. It offers a drop of nearly 1,700 vertical feet.

Two quad chairs, four triple chairs



and three moving carpets get skiers and boarders around the mountain. Chair 4 leads to the Tollhouse terrain park.

This is the a very popular location. Here riders can go big without worrying about other people dropping

in on them.

China Peak's ski able acres rivals resorts like Alpine, Northstar, Sierra and Sugar Bowl, all in the region around Tahoe.



You can give your kids some mileage for a warm up on a top-to-bottom Green run, down the 2.25 mile long Academy run. Off Academy there are multiple options for Blue runs, Black runs and some exciting tree skiing.

"While the larger resorts certainly have more amenities", stated Tim Cohee, Managing Partner, "the fact is families with kids are more interested in the overall cost, as long as the resort offers a quality experience, which we certainly do."



Perhaps the biggest challenge is finding the energy to keep going all day. To fuel that energy, China Peak has 10 food outlets at the resort that cater to every hungry appetite, from

pizza to fine dining. Drinks are available at Sully's, Jack's, Buckhorn, Mainstream Station, and JW's.

After a day on the slopes you can stay nearby to get a jump on the day when the lifts open at 9 a.m. The Inn at China Peak offers several lodging opportunities.

Take advantage of the offers that The Inn at China Peak has on mid-week packages including rooms



and lift tickets, which you can see at SkiChinaPeak.com. Kids 5 and under ski for free.

In addition, China Peak is one of the only mountain resorts in the na-



tion to allow on-site RV parking. Make your reservation now!

Active duty military personnel receive special offers. All day lift tickets are available at half off the regular price and are valid any day, holidays included.

China Peak has a treat for you. On



your birthday you are invited to ski or ride for half price. Just show the ticket office a photo ID with date of birth. This offer is not valid on holidays.

The management and staff are always available to assist you. Further resort details at SkiChinaPeak.com or (559) 233-2500.

Twenty miles to the south, the community of Shaver Lake offers many lodging opportunities including motels, B&Bs, cabins, and much more. And don't forget about staying right here at The Inn at China Peak.

The Inn at China Peak is comfortable and cozy. Many rooms have their own bathrooms.

However, dorm style rooms with



a shared bathroom and shower facilities are available for the frugal. Suites options exist.

Now that you know the answer to "Why ski China Peak," you have no excuse for not planning a trip in the near future.

Central State Sanitation

Proud to be local and family owned for over 45 years serving the foothill and mountain communities.

We are an environmentally conscience business providing septic system maintenance and products as well as portable toilet rentals.

(559) 855-2532

**CentralStateSanitation.org
Central.State@hotmail.com
 Licensed and Insured**



“Deputy Dog” Retires After 33 Years as CP’s Security Manager

China Peak’s longtime Security Manager, Jeff Chatfield retired at the end of the 24/25 season after 33 years of service to the company.

Jeff Chatfield was known around the mountain as “Deputy Dog” a name he developed for being tough on security but it was also a term of endearment.

Jeff would walk through the base area with guests and employees alike saying, “what’s up Deputy Dog”, or “there’s the dog”.

Jeff, always in his recognizable all black outfit with radio and utility belt in tow, was a force at the resort and as much a part of it as the lifts themselves.

In addition to his Security duties, he could be found every weekend helping in the parking lots, assisting guests with lockouts, or driving shuttles.

Jeff’s loyalty to China Peak is unmatched, he always made his decisions based on what would best protect the company.

After Jeff made his long-term goal to retire he spent his last two years at China Peak passing on as much knowledge as he could to the rest of us. He was training us for the day he would no longer be here.

Jeff still resides in the Fresno area with his wife Irene. Ironically, he met Irene while they were both

working a winter at China Peak several years ago.

He is enjoying an open schedule and spending lots of time with his grandkids and family.

“Deputy Dog” is an avid motorcycle enthusiast. Jeff enjoys day rides on his beloved 2014 Indian motorcycle. He proudly notes it was modeled after a ’48 and the first California numbered Indian.

He and Irene purchased a camper van just before his retirement. The couple have plans to drive up and down the United States, touring National Parks and many other sites he didn’t have time to visit while protecting our mountain.

This summer they visited Washington and Canada; Jeff recalls how navigating got interesting when everything switched from miles to kilometers.

Jeff loved his career at China Peak. He wants everyone to know the main thing that kept him here all those years was the wonderfully supportive group of customers that we have and how much he enjoyed the people he worked with.

Jeff will still be around in the winter as a guest, when he comes up to enjoy the mountain. His wife loves to ski!

Enjoy your retirement Jeff, you earned it!



Jeff Chatfield, known around the mountain as “Deputy Dog”, retired from his position as Security Manager after 33 years of service at China Peak. He will truly be missed by all.

Purchase a One or Two Day Package to Learn How to Ski or Snowboard

Special Learn to Ski or Ride Program are available for our “first time guests,” or select the Mini Package for three year olds.

Program includes one or two days of rentals, group lesson for each day and a ticket for the moving carpet.

The Mini package is for future skiers. With Mom and/or Dad along for support and encouragement, instructors make the first time sliding a fun event! Access to chairlifts is allowed during a lesson with an instructor.

Valid for ages 4+, participants can upgrade for a fee to a chairlift ticket after 12 pm after completing a lesson.

After completing the day you will receive an all mountain ticket to finish the day along with an ID card that gives you half-price tickets, rentals and group lessons for the season.

When selecting to participate, the purchaser is committing to learn to either ski or snowboard, not both.

If at any time during the program the purchaser decides to switch to skiing or snowboarding, the program starts over and purchaser is required to purchase a new one or two day package.

Details on the program are always available when you visit online at SkiChinaPeak.com/first-timers.

CP Winter Educational Field Trips for Students and Teachers

School Field Trips

China Peak is your destination for Winter Outdoor Education, offering a school field trip opportunity that students and teachers will be talking about for years to come!

The U.S. Forest Service and China Peak joined together to present an interactive outdoor experience including a day of skiing or snowboarding at group rates, as low as \$49 per student Monday to Thursday and \$54 on Friday, non-holiday*.

Price includes:

- an all mountain lift ticket
- rental equipment, skis or snowboard, boots, bindings and poles
- an any level group lesson with our staff of professional ski and snowboard teachers

China Peak offers lunch services and discounts for parents and siblings as well.

Each visit can feature a different science lesson. Some optional pre-visit lesson packets available for teachers to review.

Groups must have a minimum of 15 students (ages 5-18) and 2 chaperons. Rates are based on the group size, day of the week and frequency of visits.

This program is available Monday’s, Thursday’s and Friday’s, non-holiday* beginning January 14, 2026. Ask about special discounts available

to groups visiting four or more times per season.

Contact Group Sales to book your date today at (559) 233-2500, 5010 or just email Groups@ski-chinapeak.com. To get more about weekend and holiday group rates visit SkiChinaPeak.com/field-trips.

*Holiday dates: Dec. 26, 2025 through Jan. 5, 2026, Jan. 18-20, 2026 and Feb. 15-17, 2026

Group Rates

China Peak offers excellent group rates for your next group outing. With a group of 20 or more, you can select from a host of options for both skiers and snowboarders of all ability levels.

Group rentals available Sunday to Friday, non-holiday* at 30% off regular rates.

Skis or snowboard, boots and poles are \$54 for adults and \$38 for kids 12 and under. Group demos are \$84. Helmet rentals are \$12. Group lessons rates are \$38, but does not include rentals.

Tasty meals offered for groups, are served at the base area picnic grove, the Inn dining room or the mid-mountain Buckhorn location.

Extend your stay with discounts midweek at the Inn at China Peak. For Group Rate lodging info visit SkiChinaPeak.com. You can always call (559) 233-2500



SHAVER LAKE CABIN STAYS

Comfortable, fully-equipped cabins reflecting mountain living charm. Each property is stocked with the essentials and thoughtful touches to create a home-away-from-home atmosphere.

Complete commitment to guest satisfaction. Insights with suggestions for activities, dining, sightseeing, and always responding quickly with answers to questions or concerns.



Contact Amanda
Local Host and Shaver Lake Property Manager
(559) 387-0374
ShaverLakeCabinStays.com



The Two Simple Reasons Why You Need to Wax Your Skis or Snowboard

Article Based Upon Data
Provided by REI Technicians

Okay, why do we need to wax our skis or snowboard? Snow is already slippery. What is the point? And a fair point it is.

There are two surfaces to gliding down the slopes: the snow itself and the one you can control, the base of your skis or snowboard.

Two Simple Reasons for Waxing:

1. Adding Speed: Even if you're a beginner, waxing give you smoother slope experience.

You can get some extra speed when you are ready to move from snowplow turns to parallel turns, or from skidding turns to carving turns on a snowboard.

2. Healthier gear: Waxing will not save you from gouges caused by exposed rocks, but waxing will seal bases to prevent them from drying out.

This is similar to applying a moisturizer to your skin. Dried out bases are prone to delaminating.

This story applies to snowboards and skies, but we will use "skis" from here on for clarity.

When "wax" is mentioned, it refers to "glide" waxes that go on the full length of skis or the tips and tails of cross-country skis. "Kick" waxes



Technician uses hot iron to melt the wax that is applied to your skis or snowboard.

are a separate subject concern in the center of cross-country skis.

How to Choose Your Wax

Wax serves as an intermediary between the snow and your ski bases. Snow changes all the time. But you can't change the material in your ski bases.

The solution is to change the wax on that base material to one that's calibrated to the conditions when and where you're skiing.

• **Rub-on wax:** For a quick-and-easy performance bump, you can use all conditions rub-on wax. Please understand, it will not be nearly as effective or long lasting as hot waxing your bases.

• **Hot waxes** are sold for specific temperature ranges. The temperature is the key factor in determining how the snow and the waxed surface of your base will interact.

A wax's temperature range is listed on its packaging or online product data. You can also simplify your choice by going with a "universal" hot wax.

It will last longer than a rub-on wax, but it won't boost performance as much as a temperature specific wax.

• **High-performance wax:** Options for advanced skiers can get more complicated. Waxes with high levels of fluorocarbon (as opposed to hydrocarbon) are an expensive variation that can help in wetter snow.

Generally, the best advice is to focus on matching the temperature forecast to your wax and the wax price to your budget.

When Should You Wax Your Equipment?

Professional ski racers frequently apply new wax before every run. Conversely, some people never wax. There's no one right answer for how often you should wax.

Check out these guidelines:

• Rewax when you are in a new region where the snow is drier or wetter than your regular ski area.

• Rewax more often if you ski regularly in powder, as powder wears wax away more quickly.

• Rewax more often if you have an "extruded" base vs. a "sintered" base. You can't really tell by looking. Check your skis' specs to be sure. Sintered bases have more pores in them, so they retain wax for longer periods of time.

• Rewax if you see a pronounced chalky-gray residue on your ski bases.

• Rewax whenever it feels like the snow is getting sticky.

• Rewax at the end of ski season to keep bases from drying out. Keep the moisturizing layer thicker, too. Do not remove excess wax with a scraper until the start of next ski season.

Should You Wax Your New Skis?

• Brand new skier? You can leave on the light coating of universal wax that all skis come with for your first few lessons. It will keep speeds down yet still keep the base healthy.

• Experienced skier: Immediately



Technician uses hot iron to melt the wax that is applied to your skis or snowboard.

rewax your new skis. Putting on a thick coat of wax chosen for your anticipated snow conditions.

Shop Waxing vs. DIY Waxing

Most newer skiers let their local ski shop handle the waxing work, because shop techs have the expertise to select the right wax and the wherewithal to apply it correctly.

If you're willing to do a little practice and get a few basic tools, though, you can hot wax at home. Learn how by reading Glide Waxing Your Skis or Snowboard (<https://www.rei.com/learn/expert-advice/glide-waxing-skis-snowboard.html>).



Properly maintain your equipment regularly. Tools needed for waxing include (1) Iron, (2) Scraper, (3) Snowboard or ski wax, (4) Nylon and Brass Brush, (5) Gummy Stone, (6) File Guide, (7) Base Cleaner, (8) Phillips Screwdriver, (9) File, (10) Diamond Stones.

Enjoy a Few Days in China Peak's RV Camping Location in Back Parking Lot

China Peak Mountain Resort allows RV parking on site. No RVs will be allowed to enter between 8 am - 5 pm on weekends or holidays, no exceptions.

Rates are \$64 per night per space non-holiday, \$72 per night on holidays*. Rates are also subject to a 12% resort fee.

Weekend stays require a two-night minimum. Holiday periods require a three-night minimum.

Sixteen RV spaces, each 15' wide to allow for pop-outs and safe distances between vehicles are available with 30 amp electrical hookup.

All tow vehicles must park opposite of their RV along the bank of

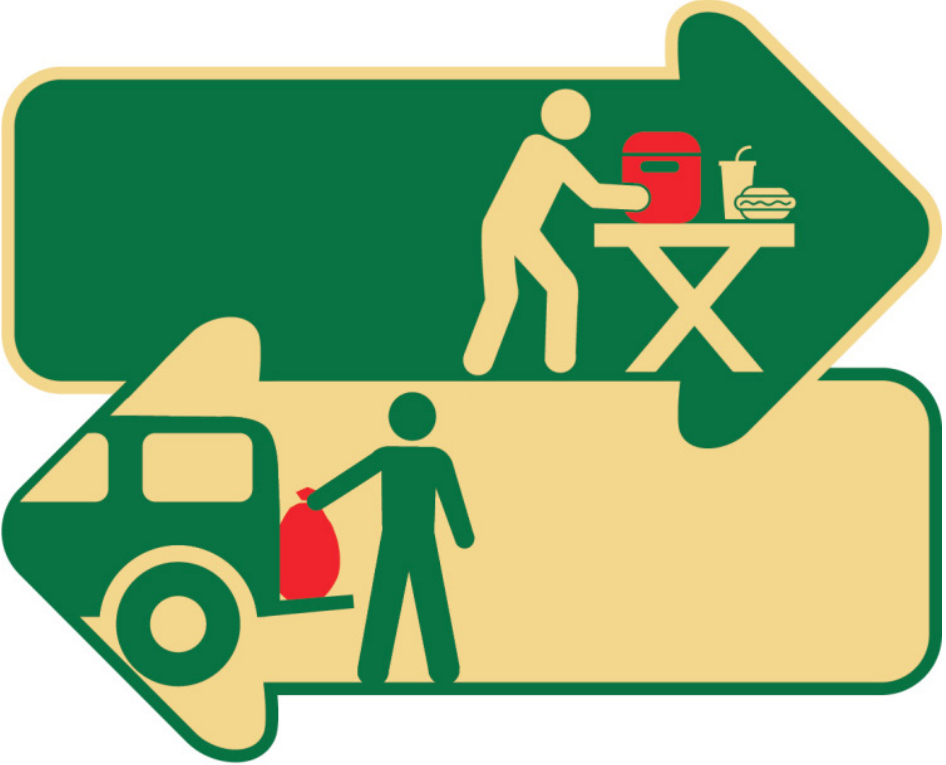
East Lot #1.

RV guests must check in to sign a policy agreement at the Inn at China Peak's front desk prior to parking.

At times, after a major snowfall event, RVs may not be allowed for a period during or following a storm or cancel reservations. It is imperative we have our parking lots 100% free of all vehicles.

For reservations or more details, please call the Inn at China Peak at (559) 233-1200 or email cpinn@skichinapeak.com.

*Holiday dates are 12/26/25 through 12/31/25, 1/17/26 through 1/18/26 and 2/14/26 through 2/15/26.



Pack it in!
Pack it out!

Si tú lo trajiste,
tú te lo llevas.

Yog koj nga dab tsi tuaj,
ces nga rov mus nrog koj

Samantha Malz Joins China Peak as New Ski School Director

The China Peak team welcomes Samantha Malz as Director of the Ski & Board School. Most recently she worked at Kirkwood.

Malz has a great love of snow sports in her blood. She grew up in Big Bear, CA where her father was a ski instructor.

After skiing and snowboarding every chance she could, at 14 she started working at the resort.

Samantha has a degree in Sports Management. She is working to get as many PSIA certifications as she can to make a long career out of instructing. So this is not just a winter job for her.

“I have worked in the ski industry for 14 years, primarily in ski schools. I love to ski and snowboard equally. I am fascinated in learning new ways to slide on snow.”

“In the summer, I love to be outside. I wake surf, mountain bike and dirt bike. I like challenges, especially if it involves the outdoors.

I enjoy traveling and working on projects. I have become a fan of older cars and trying to restore them on my own.”

“I would also like to travel to New Zealand and teach skiing and boarding there in our summer season.”

Samantha shares “I have taught everything from absolute beginners to instructors working on their

PSIA/AASI exams.”

“Being able to share my love for skiing with someone who has never done it and showing them all the possibilities or taking an advanced skier to the top to jump off one of the cornices for the first time both have their rewards.

The Ski & Board School has a unique responsibility to preserve



New Director of the Ski & Board School, Samantha Malz, practices what she teaches.

the sport by teaching the fundamentals and freedoms that skiing and riding can provide.

She is a self-motivated individual who is eager to get started and make her mark at China Peak.

When you see her, and when you are ready to see what skiing and riding is all about, book yourself a lesson.

Velasco's

Mexican Restaurant

Breakfast - Lunch - Dinner

Lunch Specials

Monday

#5 Enchilada and Taco w/ rice and beans

Tuesday

#6 Two Tacos w/ rice and beans

Wednesday

#7 Two Enchiladas w/ rice and beans

Thursday

#8 Tostada and Taco w/ rice and beans

Friday

Ground Beef Burrito

Smothered with red sauce w/ rice and beans

All specials made with ground beef. No substitutes.

\$10.50

10 am to 1 pm

Dine-in • Drive-through

Call (559) 855-6565 for Take-Out

29406 Auberry Rd. Prather in the Canyon Fork Center

SIERRA CREST PROPERTIES

Sierra Crest Properties is Shaver Lake's Top Real Estate Brokerage firm. We owe it all to our great clients, buyers and sellers! We appreciate your business and friendships while striving to continue delivering exceptional customer service and superior real estate expertise.

Each of us are independent, experienced local real estate professionals. We came together to form a unique team. Combined we offer over 200 years of real estate experience. We are of like mind in our dedication to provide superior service with the utmost level of integrity! We love what we do, and it shows! Our clients' needs and best interests are at the heart of everything we do. We set a high bar and move mountains to exceed expectations.

Meet the Team

Monica Hansen
(559) 304-6469
DRE #01989167

Tami Myers
(559) 281-5710
DRE #01017453

Peter Van Vleet
(559) 269-4831
DRE #00255743

Kathy Kuhner
(559) 284-2772
DRE #01069382

Greg Judd
(559) 779-2020
DRE #01326907

Madeline Preheim
(559) 287-6264
DRE #01186160

Sandy Crew
(559) 978-1998
DRE #01864064

41387 Tollhouse Road, Shaver Lake, CA 93664
(559) 841-8487 • SierraCrestProperties.com • License# 01062212

Not A Skier, But Enjoy Winter in the Mountains, Go Snowshoeing

Snowshoeing offers participants a low-impact, aerobic exercise that helps you stay in shape during the winter. It's versatile. You can get an easy workout or be aggressive. Plus, your dog can follow along.

Trail etiquette is important. You will often be sharing the trail with cross-country skiers. Try to make your own trail whenever possible,

China Peak Landing Open on Weekends

Winter visitors can rely on vehicle fuel and the store at the China Peak Landing being open on weekends.

Hot coffee or chocolate, food,



The fuel services and general store at China Peak Landing will be open on weekends.

snacks and beverages, as well as basic snow accessories like beanies, mittens, scarfs, etc. are available along with snow chains and snow park permits. (559) 893-3234

staying out of the tracks these skiers have worked so hard to set. Skiers have the right-of-way on trail systems. This is obvious, since it's easier for you to step off the trail safely than it is for a cross country skier to stop or go around. Always be polite to the folks you meet along the trail.

Your stance should be wider than normal when you're on snowshoes in order to keep you from stepping on the insides of your frames.

Consequently, you may feel your hips and groin muscles ache after the first few times out. If possible, walk in the steps made by the person in front of you.

Pay attention to your physical condition, the environment and gear. Stick to established trails at first.

Local SnoPark cross-country ski trails allow snowshoer to share. That way, you're never too far from others, and you're not likely to encounter avalanche hazards. Do not snowshoe alone.

Be aware of winter hazards like creek crossings, changes in weather along with tree or rock wells. If you plan to venture away from a patrolled ski area, be sure you and your companions are prepared.

Carry a regional topographic map a compass and an altimeter or a GPS to help you navigate. Know how to



Snowshoeing has gained popularity with modern lightweight and user-friendly equipment. Try the cross country ski trails for snowshoers that go out of the Tamarack SnoPark.

use them. The winter backcountry is not the best place to learn. Before heading out, leave your trip plans with a responsible person and let them know whom to contact in case you don't return on time.

Know the signs of hypothermia so you can recognize them in members of your party. Stay hydrated by drinking water to keep your muscles functioning and helping your body fend off hypothermia.

Keep your water from freezing. Use an insulating cover for water bottles. Hot drinks in vacuum bottles keep you hydrated and warm.

There are regional sporting good outlets that rent and sell snowshoes. They include REI in Fresno and Shaver Lake Sports in Shaver Lake.

All will fit you with a pair that is

appropriate for you. You don't need special shoes for snowshoeing, just waterproof hiking boots.

Learning to snowshoe is easy. In five minutes you'll be having a good time. But, you're not going to be able to go as far as you can walk.

So if you are used to walking five miles on a hike during the summer, you are probably going to go about two and a half miles in that same amount of time.

The size of snowshoes are dependent on how much a person weighs. The heavier a person is the larger snowshoes they'll need to keep them from sinking into the snow.

The sales staff at the store from which you bought or rented them will make sure you have the right ones for your height and weight.

Dining and Après Ski.

Great food and fun.

Hanging around or staying the night? Come enjoy the retro atmosphere at this classic lodge-style restaurant and bar. The full bar is a popular hangout after a day on the slopes, and the restaurant features an array of satisfying appetizers, homemade soups, creative entrées and delicious desserts. You'll find JW's on the ground floor of The Inn at China Peak.

(559) 233-1200

JW'S
Original
EST. 1962
RESTAURANT

Lay Down and Spread Your Wings to Create Snow Angels

After the first dusting of snow it's mandatory that you put your snow gear on and run outside and make a snow angel! For good luck you must do this first before building a snowman or a snowball.

To make the perfect snow angel you need fresh snow that's deep enough so you won't see the ground behind it and the top should be powder. Once you are outside and find a spot fit for a snow angel, how do you enter?

You must fight your instinct and bring your legs together in the air before you hit the ground. When you land, your body should look like the letter T.

This is so that when you expand and contract your legs in the snow, a wall of it does not form between your legs as it would have had you landed in a star shape. The robes of your angel will look flowing and majestic.

Once you are done expanding and contracting your arms and legs, you can get up within the angel you have created, then jump away from it again so that you don't leave footprints too near to it. With your snow angel complete, you can now admire it or even make another one.

Then keep your arms as straight as you can and swing them almost to the top of your head and then almost straight at your sides. You

only need to do this a couple times.

Carefully stand up as to not disturb the snow next to you and then sit back and enjoy the perfect snow angel you've created.

The laughter, the teamwork, and the shared joy of crafting the perfect snow angel stand as a testament to the simple pleasures winter offers. Remember, even the coldest season can be filled with warmth and connection when spent with loved ones.

Let your snow angel serve as a reminder of the beauty and wonder of winter. Embrace the spirit of adventure and creativity that it ignites within us.

Whether you're building a snowman, having a snowball fight, or simply enjoying a peaceful walk in the snow, each moment spent outdoors creates memories that will warm your hearts long after the snow has melted away.

So, bundle up, step out into the crisp winter air, and embrace the magic of the season.

Let the joy of family, the power of imagination, and the thrill of adventure guide you on your winter journey. Create lasting memories that will forever remind you that the greatest treasures are found not in the warmth of the sun, but in the warmth of shared experiences with the ones you love.



A fun family adventure involves teaching your kids how to make Snow Angels. All you need is some fresh powder snow, and a slight bit of coordination to stick your landing!

Visit the App Store or Google Play to Enjoy Benefits of China Peak App

This is the China Peak single resort app. For navigating your home mountain, tracking your visits and having the most up to date information at your fingertips at all times.

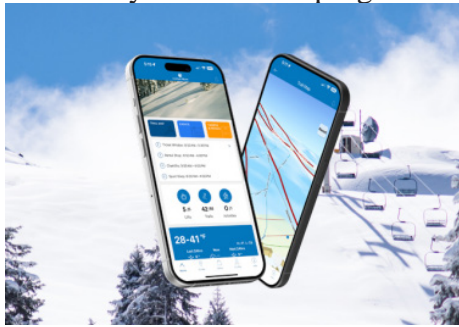
Kick off an extraordinary skiing journey with the China Peak App, your dedicated guide to the amazing China Peak adventure.

The China Peak app moves around the mountain. It is your portal to an unmatched skiing experience, providing detailed insights and features specifically designed for the resort and its avid skiers.

You can stay updated with actual the an all real-time lift status, weather conditions, and live mountain views to plan your ski adven-

tures perfectly.

Effortlessly navigate with detailed 3D maps, manage your ski passes, and track your downhill progress all



in one convenient place.

The China Peak App also nurtures a dynamic skiing community, enriching your social and engaging experiences on the slopes. Your skiing adventure begins now!

Investing In What Matters, You.

When you partner with **Community West Bank**, you get the banking experience you deserve from advocates who understand you and share your drive to succeed. Who listen to your goals. Who are proven problem-solvers to help you navigate your financial future.

When your bank is invested in a relationship with you, it makes a world of difference. At Community West Bank we have been making that difference for over four decades, for clients, businesses and communities of every type and size.

Call us today to experience the difference of relationship banking.

Liz Salas
VP, Business Banking
Officer
(559) 298-1775
Ext. 3802

Jeannine Welton
VP, Banking Center
Manager
(559) 855-4100
Ext. 4112

Crystal Grieco
SVP, Director
of Banking Center
Operations
(559) 730-2884

Community West Bank
Investing In Relationships

A Variety of Musicians Will Perform During the Season

Enjoy live music at China Peak all Winter long. Live music will take place every Saturday and Sunday at China Peak. Expect a variety of acoustic and electric solo guitarists, larger bands, and DJ's.

There will be live music on the decks at the Day lodge and Buckhorn every weekend.

Erick Tyler

Erick Tyler is a favorite at China Peak, whether it's his mellow acoustic songs or guitar shredding Metallica solos he plays something for everyone. Erick can be found at the Day lodge and Buckhorn, and even playing dinner sets at JW's restaurant and bar on special occasions.

DJ Mvsty



A local legend at China Peak, DJ Mvsty has become a household name on the mountain. Most often

found at Buckhorn, DJ Mvsty plays multiple times a month whether it be for a party or event at Buckhorn or just to spin tracks on a busy Saturday. On special occasions DJ Mvsty brings his friends, Casa De Untz, for a day filled with a variety of DJs spinning remixes and popular tracks.

CAB Street Band

The family group of 4 that makes up CAB Street Band is always a



treat to have at China Peak. With 3 generations of family members playing in the band they're sure to make you feel at home with their melodies. Pamela is the lead singer and bassists, while her father Charles is the lead guitarist and her mother Vicki is a harmony singer and auxiliary percussionist. While drummer Joey may not be related by blood, he is just as much a member of the family. On occasion Pamela's son, Kono, can be found



Above, Erick Tyler entertains the Buckhorn enthusiasts with a variety of songs. Below, Carlo Borjas and Mark Cameron are fan favorites as they play popular country music.



playing the drums in Joey's stead.

Carlo Cameron Country

The country duo of Carlo Borjas and Mark Cameron has quickly be-

come a fan favorite at China Peak. They can be found at the Day lodge and Buckhorn playing a wide variety of popular country music.

**It's not just about the skiing.
It's so much more.**

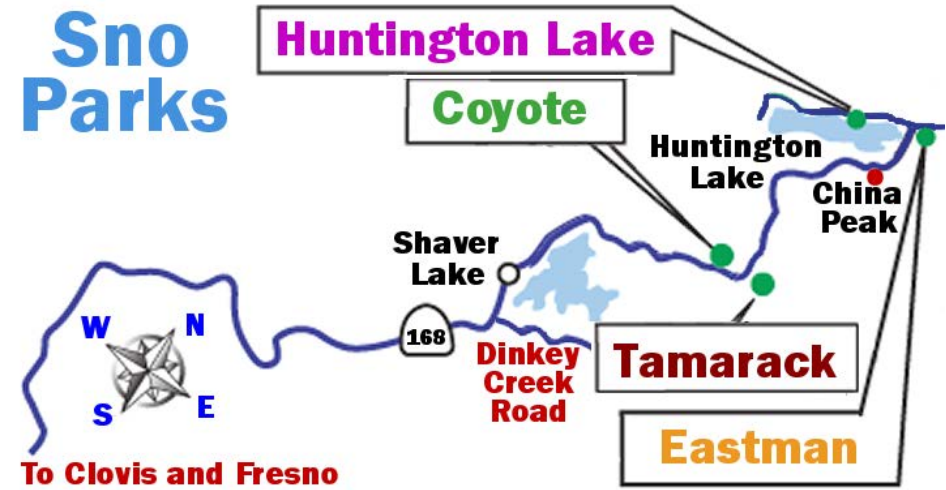
Don't think you have to be a pro skier to join in all the fun. After all, we're a social club with a skiing problem! Whether you're just getting started or well seasoned, you'll find friends at your level and others eager to help bring your skills up to the next.

2026 Ski Trip Schedule

**Winter Park, CO.
Mammoth Mountain, CA**

New members get a \$25 voucher for any 2025-26 FSC activity. Contact Cherry Reitz for details. cherryreitz1@gmail.com or (559) 779-7933)

**Learn More About Us at FresnoSkiClub.com
P O Box 2044, Clovis, CA 93613 • (559) 779-7933**



Five Sno Parks Along 168 Near Shaver and Huntington

For an inexpensive outdoor adventure, you can hardly beat playing at the Sno-Parks along Hwy 168 between Shaver and Huntington Lakes. Look for the Sno-Park signs.

These parks provide access to snow-plowed parking lots, play areas and restroom facilities. Bring toilet paper. Sometimes the bathrooms run out. Handi-wipes are, well, handy too!

Bring a plastic bag for something fido might leave in the forest. Be a good neighbor by packing out whatever you packed in. Always carry a shovel, blankets, water, flashlight and tire chains.

Use common sense, wear proper clothing. Respect the terrain and weather. All affect your safety. Call (800) 427-7623 for a CalTrans

highway conditions.

Now back to the inexpensive part! Sno-Park use requires a permit from November 1 to May 30. The fee is \$15 per car, per day or you can buy an annual \$40 pass.

All passes can be purchased at Ohv.Parks.ca.gov/?page_id=30735 or at several stores in Shaver and at Huntington Lakes including Cressman's, Shaver Lake Sports, and China Peak Landing

If you arrive later in the day and parking is hard to find, do not make the mistake of parking on Highway 168 over the white line. Don't double park anywhere.

This creates unsafe conditions and the CHP officers and Fresno County Sheriffs will ticket and/or have your vehicle towed for reasons of safety.

China Peak and The Landing Are Ideal for Your Wedding

Sixty miles north-east of Fresno, this 1500-acre ski resort can be transformed for a winter or summer wedding or for those looking for a unique experience. If that’s not enough, you can move over to Huntington Lake at The Landing!

With unparalleled beauty and flexibility, a wedding at China Peak Mountain Resort is nothing short of magical. Why not have your own private resort for your special day.



Happy couple share a kiss as they celebrate their wedding ceremony at the Peak.

China Peak is much more than a special event venue - it’s an entire wedding experience.

This beautiful mountain resort is where you and your closest family and friends can spend a weekend together at your own private moun-

tain oasis.

You can make your celebration deliciously memorable. Impress your wedding guests with the dynamic flavors prepared by our wonderful on-site catering experts. Whether for a sophisticated cocktail buffet, an intimate brunch, or a grand reception banquet, discover their tempting menus, where every element is customizable.

Whether you want a sophisticated cocktail buffet, an intimate brunch, or a grand reception banquet, no problem. Review the tempting menus, where every element is customizable to your tastes.

Explore your wedding day or special events options. Planning a wedding is truly an art. That is the very reason why couples rely on the knowledge, preparedness and creativity of wedding professionals who have been down this road “a time or two” to guide you.

You can view a list of Preferred Wedding Vendors with extensive knowledge and experience online.

Begin exploring wedding day options at ChinaPeakWeddings.com or with Wedding Coordinator, Tess, by email at weddings@skichina-peak.com or by calling her at either (559) 673-5684 or (559) 960-5014.



The bridal party jumps for joy as they head out to celebrate bride’s special day at China Peak. Many options await the bride as she plans her event with CP’s wedding coordinator.

Discounts and Ticket Deals for 2025/2026 Give You an Incentive

These discounts and deals are only available for purchase at the resort. Identification is required.

MILITARY - Retired and veteran military personnel can purchase 1 (one) discounted all day lift ticket per day for their use only, valid any day, including holidays*. Active duty and dependents of active duty military can purchase 1 (one) discounted all day lift ticket per day for their use only, valid any day, including holidays. \$98 non-holiday, \$109 holiday, please present current military ID at the time of purchase.

HAPPY BIRTHDAY - Enjoy your birthday on the slopes at China

Peak! Purchase an all day lift ticket at 50% OFF for use on your birthday. Valid during non-holiday dates only, no rain checks. Must present photo ID with date of birth.

GROUP RATES - Available for lift tickets, rentals, Learn to Ski or Ride packages and custom catering for groups of 20 at China Peak. The group can be a mix of experienced skier and riders that just need a lift ticket to first timers that need a full lesson and rental package.

*Holiday dates 12/26/25 - 12/31/25, 1/17/26 - 1/18/26 AND 2/14/26 - 2/15/26. All prices are subject to change.

**Propane
Peace
of Mind.**

MountainFlame PROPANE

Call 24/7 (559) 855-5955
MountainFlamePropane.com

Norm Kato - Owner

BOB'S MARKET

Groceries
Beer/Wine
Produce
Fresh Meats

**Excellent Grocery Selection,
Dairy Products, Fresh Produce, Sundries,
Gifts, Beer, Wine, Ice. You Can Also
Pickup Deli Grab and Go Burritos,
Sandwiches and Famous Chunky Bread**

Featuring Quality Meats

Good Selection of
Gluten Free Items

Firewood for Sale
(559) 841-7104

(559) 841-7104
41781 Tollhouse Rd, Shaver Lake

What Can You Expect With the Regional Cell Phone and WiFi Service Availability

The Eastern Fresno County mountains are not known to be real cell phone or internet friendly. Your kids will hate the fact they cannot easily recharge their phones or keep in constant contact with their friends. But that can be a really good thing. Use this time to help educate the young and old alike, regarding the great outdoors!

After a family hike, a dip in the lake, a fishing adventure, a horse-back ride, rock climbing or another fun event, have them express how they feel about what they learned from the experience.

When you pack for your trip, be sure to include a box of crayons, a few pencils and a large blank pad for each of the kids. You might also enjoy having these items for the adults as well!

Then have everyone draw a picture and/or write an explanation of the adventure that they can share with other family members and friends not along on the vacation. Perhaps they can create a journal of their vacation.

Thus, they have an educational experience with art and writing that end up being a form of story telling.

Who knows. Perhaps a budding graphic artist, journalist or designer will be born!



Karen Garcia was named the Van Neely Award winner for 2024,2025. She is a popular bartender at Sully's Pub in the Day Lodge. She always makes sure folks have a good time.

Van Neely Award Goes to Karen Garcia for 2024/25

Tristan Cohee, Director of Hotel, Food and Beverage

Every year we recognize employees with an year end award ceremony. There are many different awards but one that stands out among the rest is the Van Neely award.

This award is for one who stands out to all guests and staff members, making sure everyone is having the best experience both behind the scenes and on the front line.

That is just who Van was. Van was someone who took pride in being the face of the resort and was easily recognizable by his extreme generosity, friendliness, and hard work.

The 2024/25 Van Neely award has been presented to our beloved, Karen Garcia.

Karen bartends at Sully's Pub, in the Day lodge at China Peak. While her drinks can put anyone in a good mood, we recognized Karen with this award for other reasons.

They are her contagious smile, her upbeat attitude, and overall hard work. Once you meet her, you will remember Karen. She brings a sense of hospitality that all businesses should strive for in their employees.

We work in a place of joy, great music, good vibes, and vacationing folks. It's almost as if she is having

more fun than the guests. When Karen is not competing in the famous battle of the Blood Marys between Sully's Pub and Buckhorn, she is sitting passenger with her husband, Tony. I follow Karen on social media, and have a hard time finding a week when she isn't on the road enjoying the summer air.

This is something that most China Peak employees look forward to after a grueling winter season. Karen takes full advantage of enjoying the offseason. The bar is set high for our 2025/26 season Van Neely award winner.

Gift Cards Available Online and at the Peak

China Peak gift cards are excellent gifts for skier or snowboarder friends and family. They are perfect for the holidays, birthdays and anniversaries or for someone who wants to learn to ski or snowboard.

Cards of \$25, \$50, \$100 and \$200 or more are valid for all services including lodging, season passes, lift tickets, food and beverage and sport shop merchandise.

Go online to SkiChinaPeak.com. Allow 5-7 days for delivery, or contact Guest Services at (559) 233-2500, extension 5100.

Ashtree Enterprises

Robert Ornelas Jr



2nd Generation Chimney Sweep

559-835-2750

Text message name/address/email for appointment or information to : 559-283-3386

Fireplace Inspection Chimney Sweep Dryer Vent Service

Serving Fresno, Madera, Kings, and Tulare Counties

Visit Us at SequoiaBrewingCo.com





Eat local • Drink local • Ski local

(559) 434-2739

1188 E Champlain Dr #107, Fresno, CA, 93720



Down to Earth Bakery & Deli

(559) 893-2880

- Beverages
- Smoked Meats
- Burritos - Tacos
- Tasty Salads
- Bakery
- General Store

It is a Tradition. Great location to meet, relax, enjoy a meal and play in our big backyard.

55083 Point Rd. Big Creek • Visit Us at BigCreekGeneralStore.com



Many Improvements Made at China Peak for the New Season

(continued from page 1)
Mainstream Station will see multiple new changes this winter season. The food service at Mainstream is getting a new addition - pizza.

Pizza is the newest addition to Mainstream's food menu after its revamp last season saw the addition of french fries, chicken nuggets, and other favorites that were previously only at the Daylodge.



Pizza is now on the menu at Mainstream Station. Stop in for a slice as you take a break.

The new **1st Turn Program** launches at China Peak this winter, and Mainstream will be the home of the 1st Turn meeting area.

The back half of Mainstream is being revamped into the new first timer zone where skiers and snowboarders will experience their first day on the mountain.

1ST TURN

LEARN TO SKI + RIDE CENTERS

Conveniently located next to the moving carpets, first timers will be close to all amenities they may need.

Base Camp, located behind Guest Services and across from Chair 1, is also getting improvements this winter. The new Base Camp Snack Shack opens this winter, offering breakfast waffles, pretzels, ice cream by the scoop, and cold beer.

Base Camp is currently home to Base Camp Sports, which offers a wide variety of accessories and small items you may need

Sully's Pub at the Daylodge gets a makeover this winter! Home to everyone's favorite Boston bartender, Sully's Pub will see a remodel this winter with new carpet, lighting, and furniture. Additionally, a new coffee bar will be located in Sully's Pub.

You can now enjoy lattes, capuccinos, americanos, espresso, and more coffee beverages at China Peak, no



Improvements underway at the Inn at China Peak are being undertaken to enhance guest experience. This is a first step in a multi-year plan to remodel the facilities for visitors. need to stop on your way up.

Improvements are being made at the **Inn at China Peak** to further enhance the guest experience.

The first floor of the hotel is being remodeled with new carpet and further upgrades to the hotel rooms.

This remodel is just the first step in a multi-year plan to remodel the Inn at China Peak. What better way to enjoy the slopes than waking up in the snow?

Don't forget to check out JW's original restaurant and bar, open

Thursday-Sunday from 5 - 9 pm. Keep your eye on the various China Peak Mountain Resort social media outlets to be notified of special apre nights with live music, drink specials, and more!

The 2025/2026 season stands to be among the greatest at The Peak!



GEAR UP FOR THE SEASON

CLAWSON
MOTORSPORTS



4EVER UNTAMED



TOYOTA



CHINA PEAK

Official Vehicle of China Peak